

Fortinet

Exam Questions NSE5_FMG-7.2

Fortinet NSE 5 - FortiManager 7.2



NEW QUESTION 1

- (Topic 1)

An administrator would like to create an SD-WAN using central management in the Training ADOM.

To create an SD-WAN using central management, which two steps must be completed? (Choose two.)

- A. Specify a gateway address when you create a default SD-WAN static route
- B. Enable SD-WAN central management in the Training ADOM
- C. Configure and install the SD-WAN firewall policy and SD-WAN static route before installing the SD-WAN template settings
- D. Remove all the interface references such as routes or policies that will be a part of SD-WAN member interfaces

Answer: BD

Explanation:

Reference: <https://docs.fortinet.com/document/fortigate/6.0.0/cookbook/676493/removing-existing-configuration-references-to-interfaces>

NEW QUESTION 2

- (Topic 1)

Which two settings must be configured for SD-WAN Central Management? (Choose two.)

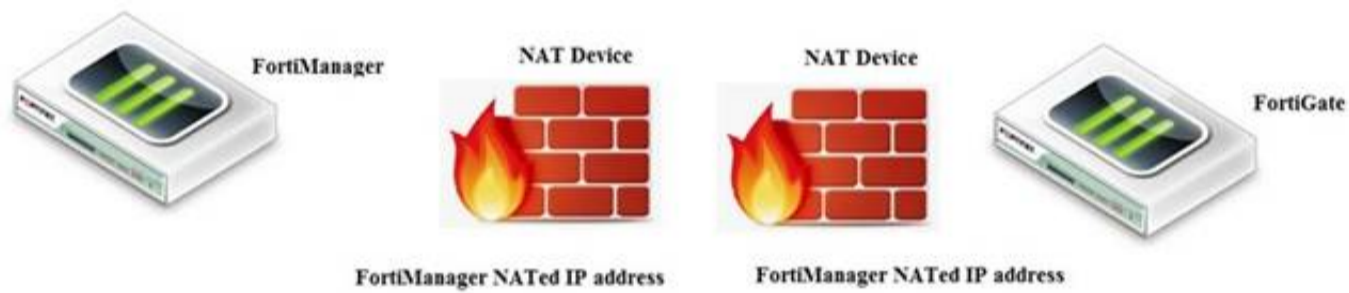
- A. SD-WAN must be enabled on per-ADOM basis
- B. You can create multiple SD-WAN interfaces per VDOM
- C. When you configure an SD-WAN, you must specify at least two member interfaces.
- D. The first step in creating an SD-WAN using FortiManager is to create two SD-WAN firewall policies.

Answer: AC

NEW QUESTION 3

- (Topic 1)

View the following exhibit.



If both FortiManager and FortiGate are behind the NAT devices, what are the two expected results? (Choose two.)

- A. FortiGate is discovered by FortiManager through the FortiGate NATed IP address.
- B. FortiGate can announce itself to FortiManager only if the FortiManager IP address is configured on FortiGate under central management.
- C. During discovery, the FortiManager NATed IP address is not set by default on FortiGate.
- D. If the FCFM tunnel is torn down, FortiManager will try to re-establish the FGFM tunnel.

Answer: AC

Explanation:

FortiManager can discover FortiGate through a NATed FortiGate IP address. If a FortiManager NATed IP address is configured on FortiGate, then FortiGate can announce itself to FortiManager. FortiManager will not attempt to re-establish the FGFM tunnel to the FortiGate NATed IP address, if the FGFM tunnel is interrupted. Just like it was in the NATed FortiManager scenario, the FortiManager NATed IP address in this scenario is not configured under FortiGate central management configuration.

NEW QUESTION 4

- (Topic 1)

What is the purpose of the Policy Check feature on FortiManager?

- A. To find and provide recommendation to combine multiple separate policy packages into one common policy package
- B. To find and merge duplicate policies in the policy package
- C. To find and provide recommendation for optimizing policies in a policy package
- D. To find and delete disabled firewall policies in the policy package

Answer: C

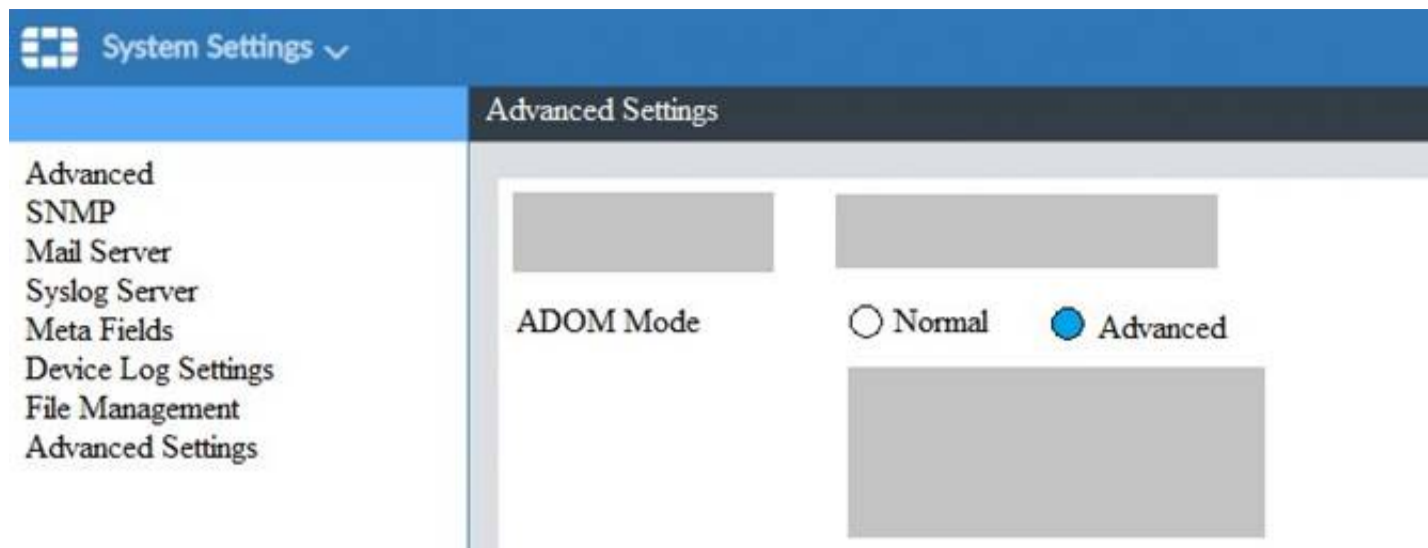
Explanation:

Reference: https://help.fortinet.com/fmgr/50hlp/56/5-6-2/FortiManager_Admin_Guide/1200_Policy%20and%20Objects/0800_Managing%20policy%20packages/2400_Perform%20a%20policy%20consistency%20check.htm

NEW QUESTION 5

- (Topic 1)

View the following exhibit.



What is the purpose of setting ADOM Mode to Advanced?

- A. The setting allows automatic updates to the policy package configuration for a managed device
- B. The setting enables the ADOMs feature on FortiManager
- C. This setting allows you to assign different VDOMs from the same FortiGate to different ADOMs.
- D. The setting disables concurrent ADOM access and adds ADOM locking

Answer: C

Explanation:

Reference: <https://docs.fortinet.com/document/fortianalyzer/7.0.0/administration-guide/66530/adom-device-modes>

NEW QUESTION 6

- (Topic 3)

What does a policy package status of Modified indicate?

- A. FortiManager is unable to determine the policy package status
- B. The policy package was never imported after a device was registered on FortiManager
- C. The Policy configuration has been changed on a managed device and changes have not yet been imported into FortiManager
- D. The Policy package configuration has been changed on FortiManager and changes have not yet been installed on the managed device.

Answer: B

Explanation:

Reference: http://help.fortinet.com/fmgr/50hlp/56/5-6-1/FortiManager_Admin_Guide/1200_Policy%20and%20Objects/0800_Managing%20policy%20packages/2200_Policy%20Package%20Installation%20targets.htm

NEW QUESTION 7

- (Topic 3)

An administrator has assigned a global policy package to custom ADOM1. Then the administrator creates a new policy package Fortinet in the custom ADOM1. What will happen to the Fortinet policy package when it is created?

- A. You need to assign the global policy package from the global ADOM
- B. You need to reapply the global policy package to the ADOM
- C. it automatically assigns the global policies
- D. You can select the option to assign the global policies

Answer: C

NEW QUESTION 8

- (Topic 3)

Which three settings are the factory default settings on FortiManager? (Choose three.)

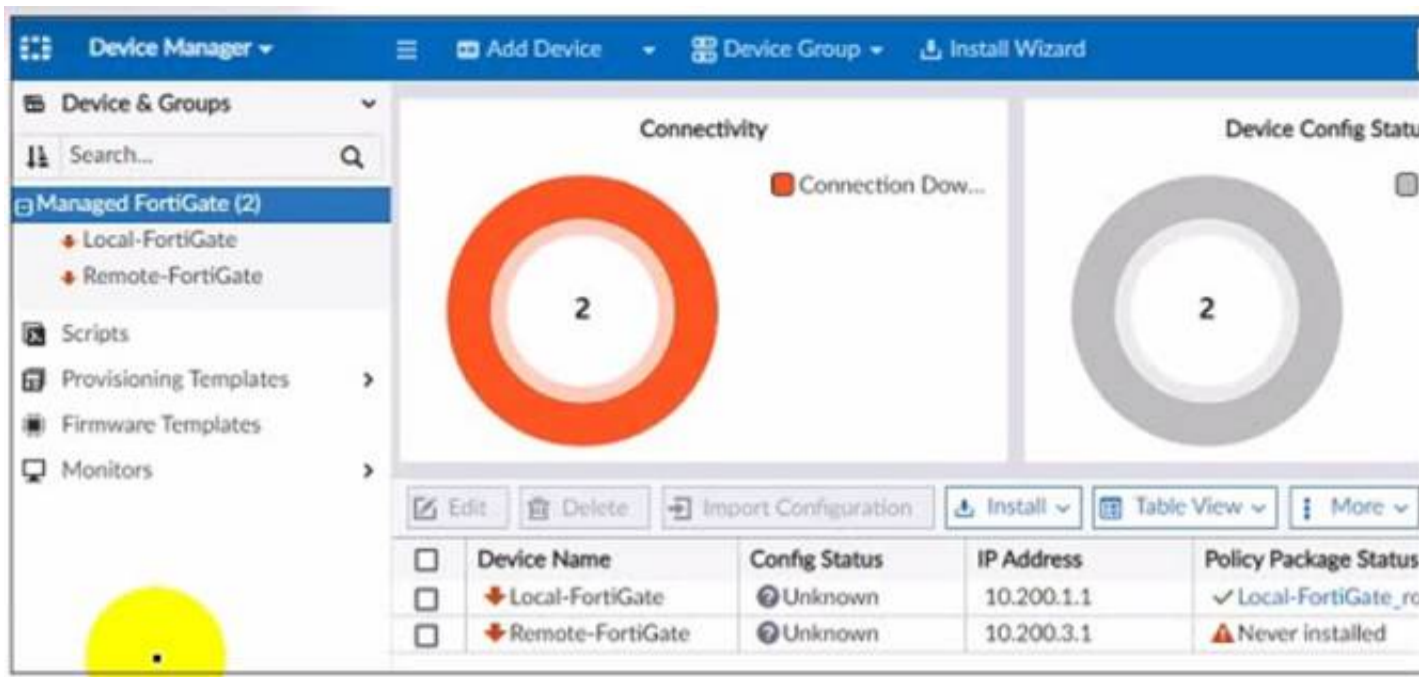
- A. The administrative domain is disabled.
- B. The Port1 interface IP address is 192.168.1.99/24.
- C. Management Extension applications are enabled.
- D. The FortiManager setup wizard is disabled.
- E. FortiAnalyzer features are disabled.

Answer: ABE

NEW QUESTION 9

- (Topic 3)

Refer to the exhibit.



A junior administrator is troubleshooting a FortiManager connectivity issue that is occurring with managed FortiGate devices. Given the FortiManager device manager settings shown in the exhibit, what can you conclude from the exhibit?

- A. The administrator had restored the FortiManager configuration file
- B. The administrator must refresh both devices to restore connectivity
- C. FortiManager test internet connectivity therefore, both devices appear to be down
- D. The administrator can reclaim the FGFM tunnel to get both devices online

Answer: C

NEW QUESTION 10

.....

Thank You for Trying Our Product

We offer two products:

1st - We have Practice Tests Software with Actual Exam Questions

2nd - Questions and Answers in PDF Format

NSE5_FMG-7.2 Practice Exam Features:

- * NSE5_FMG-7.2 Questions and Answers Updated Frequently
- * NSE5_FMG-7.2 Practice Questions Verified by Expert Senior Certified Staff
- * NSE5_FMG-7.2 Most Realistic Questions that Guarantee you a Pass on Your First Try
- * NSE5_FMG-7.2 Practice Test Questions in Multiple Choice Formats and Updates for 1 Year

100% Actual & Verified — Instant Download, Please Click
[Order The NSE5_FMG-7.2 Practice Test Here](#)