

HP

Exam Questions HPE0-J68

HPE Storage Solutions

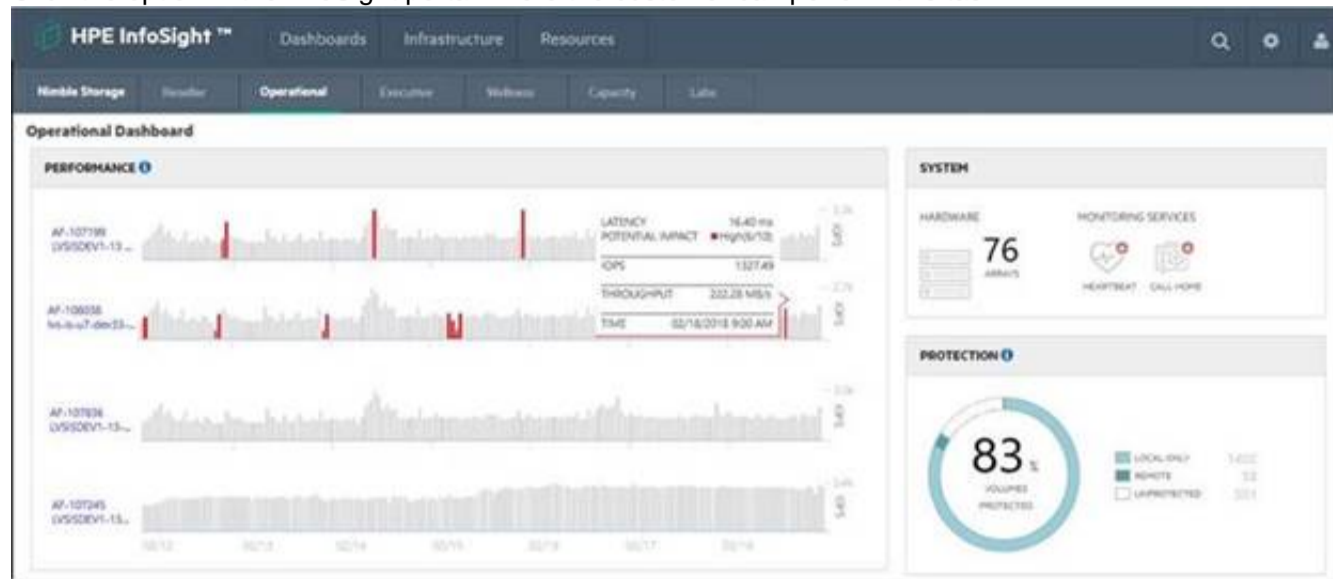


NEW QUESTION 1

- (Exam Topic 1)

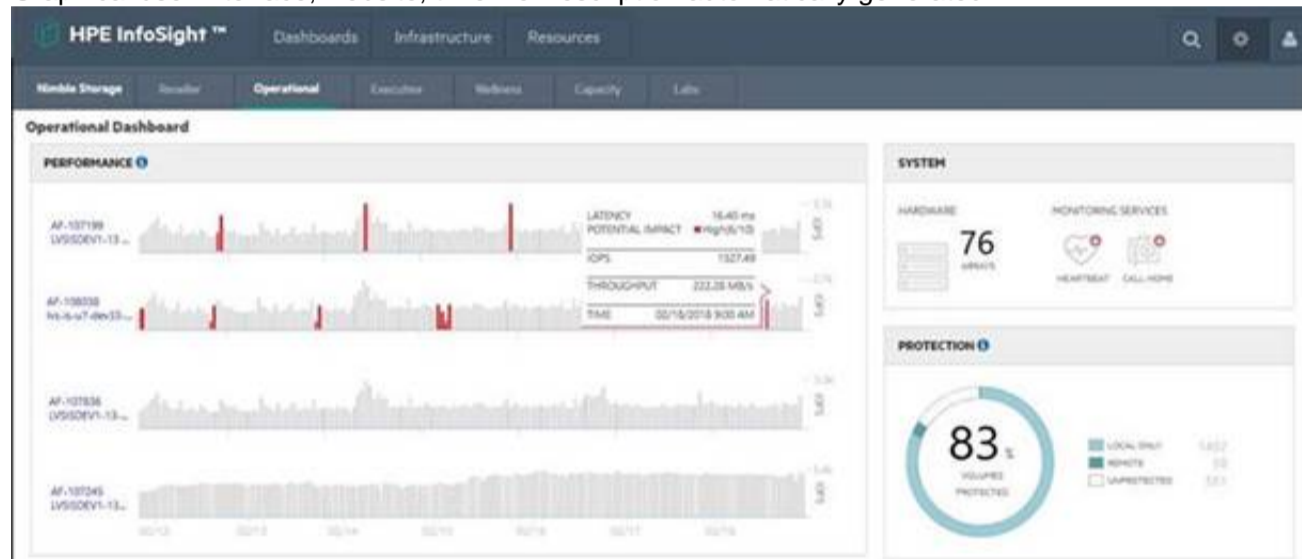
A customer has a Nimble HF40 and needs to create a support ticket.

Click the option in the InfoSight portal where the customer can perform this task.



Solution:

Graphical user interface, website, timeline Description automatically generated



Does this meet the goal?

- A. Yes
- B. No

Answer: A

NEW QUESTION 2

- (Exam Topic 1)

You have proposed a Primera array to a customer for new primary storage. The customer currently has an older 3PAR array that they will continue to use moving forward. The customer would like high availability configured.

Which RMC Peer Copy pre-requisites do you need to point out to the customer? (Choose two.)

- A. No license is required
- B. 2-port 10 Gb Ethernet Adapter (NIC) is required
- C. 4-port 1 Gb Ethernet Adapter (NIC) is required in each array
- D. RMC 6.2 is required
- E. Target drive type must match source drive type

Answer: CD

NEW QUESTION 3

- (Exam Topic 1)

Refer to the exhibit.



You are designing a new Primera solution and demonstrating performance numbers to the customer. The customer reviews the configuration and requests a change to the configuration that will increase Random Write IOPS. Which action will satisfy the customer request?

- A. Add more disks of smaller capacity
- B. Upgrade the HPE Primera base model
- C. Change to larger SSDs
- D. Add more FC Ports

Answer: C

NEW QUESTION 4

- (Exam Topic 1)

A customer runs their core application on an aging HPE 3PAR StoreServ 20000 Storage array. The application requires 100% availability. Which HPE storage solution should you recommend?

- A. Nimble
- B. Nimble dHCI
- C. Primera
- D. MSA

Answer: C

NEW QUESTION 5

- (Exam Topic 2)

Which storage principle would benefits of customer who has several departments in their organization with different storage needs?

- A. Autonomic Management
- B. Federated storage
- C. Scale out storage
- D. Multi-tenancy

Answer: D

NEW QUESTION 6

- (Exam Topic 2)

A customer has deployed an HPE 3PAR StoreServ 8400 with two nodes and three additional disk enclosure .They want to expand the solution with two additional nodes and three additional disk enclosure ..What must you do to expand the customers solution?

- A. The new disks must be imported before the new nodes can be added
- B. The existing nodes need to be take Offline
- C. The system should be updated to the latest supported OS before the hardware expansion
- D. The new nodes and enclosure must be placed in an adjacent racks

Answer: C

NEW QUESTION 7

- (Exam Topic 2)

How does the HPE StoreVirtual VSA storage platform scale performance and capacity?

- A. eliminates the need for storage controllers
- B. enables access through multiple protocols
- C. aggregates all resources into a single storage pool
- D. recreates storage pools on multiple devices

Answer: D

NEW QUESTION 8

- (Exam Topic 2)

A customer needs to add another HPE 3PAR StoreServ system and plans to use the federated storage approach. Which advantages can the customer expect? (Choose two.)

- A. load balancing
- B. reduced power, cooling, and environmental impacts
- C. allows multiple management tools
- D. easier migration
- E. federated deduplication

Answer: AD

Explanation:

Federated storage—Move data between storage systems in a peer-to-peer relationship simply, dynamically, and nondisruptively to improve storage utilization, balance workloads, and ease storage migration.

NEW QUESTION 9

- (Exam Topic 2)

Which type of networking switch handles both Ethernet and fibre channel traffic?

- A. Director
- B. Virtual
- C. Edge
- D. Converged

Answer: D

NEW QUESTION 10

- (Exam Topic 2)

Which storage protocol is supported by virtual connect Flex-10?

- A. FCoE
- B. FC
- C. iSCSI
- D. FCIP

Answer: C

NEW QUESTION 11

- (Exam Topic 2)

While demonstrating an HPE 3PAR StoreServ 9450 array, the customer asks you to demonstrate the File Persona features. Which objects do you need to create to demonstrate these features? (Choose two.)

- A. File share
- B. Storage container
- C. Host
- D. Remote copy group
- E. Virtual file server

Answer: AE

NEW QUESTION 12

- (Exam Topic 2)

A customer needs to upgrade their HPE storage environment, including driver and firmware levels and OS, to the latest version. Where can you find the needed information about supported versions?

- A. HPE Storage Assessment Foundry
- B. HPE SAN Design Reference Guide
- C. HPE OneView
- D. HPE SPOCK

Answer: D

NEW QUESTION 13

- (Exam Topic 2)

A customer needs to be manually map out preferred paths within a multi-switch fabric, based on application ,priority ,and topology, while allowing failover to a non-preferred path if the preferred path fails, Which B-series FC switch functionality should be used to provide this?

- A. Quality of services
- B. Enhanced group management
- C. Frame filtering
- D. Traffic isolation Zones

Answer: D

NEW QUESTION 14

- (Exam Topic 2)

A customer has mission-critical applications that intermittently experience heavy disk I/O. The storage speed has the most impact on the application's performance. The customer does not want to dedicate SSD disks to these applications because additional performance is only needed periodically, and moving the volumes between tiers takes too long.

Which HPE StoreVirtual VSA feature can address this customer's challenge?

- A. Storage virtualization
- B. Space Reclamation
- C. Thin Provisioning
- D. Adaptive Optimization

Answer: D

NEW QUESTION 15

- (Exam Topic 2)

You are planning a single-site Nimble solution with iSCSI connectivity. Two 10GbE SFP+ dual port NICs are included in the configuration. You designed an Intelligent Resilient Framework (IRF) stack with HPE FlexFabric 5900CP switches.

Which statement is correct when discussing the IRF limits for this configuration?

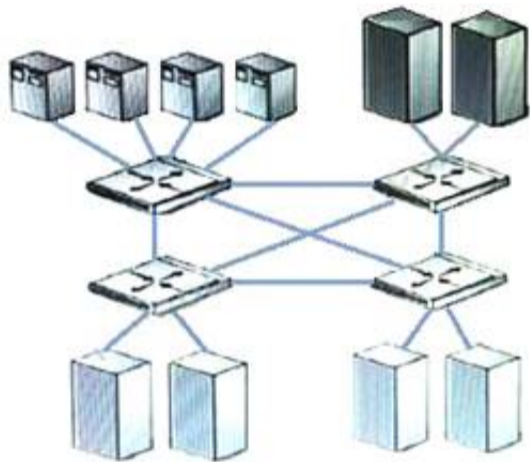
- A. When connecting an iSCSI storage to an IRF stack, a minimum of four 10GbE ports must be used per switch.
- B. A maximum of two switches can be used in an IRF stack when connecting storage.
- C. In an IRF stack with storage connectivity, the 40GbE ports cannot be used.
- D. The used IRF ports for iSCSI traffic have to be configured as 10GbE converged ports.

Answer: A

NEW QUESTION 16

- (Exam Topic 2)

Exhibit:



Which fabric design is shown?

- A. meshed
- B. single fabric
- C. cascaded
- D. core-edge

Answer: A

NEW QUESTION 17

- (Exam Topic 2)

An existing Nimble customer is interested in adding storage to their environment to store his Backups, but has a constrained budget and limited personal .The solution must scale to allow for substantial growth over the next five years?

- A. Nimble SF series
- B. Nimble AF series
- C. Nimble cloud volume
- D. Nimble CS series

Answer: B

NEW QUESTION 18

- (Exam Topic 2)

A Company using an existing 1GB ISCSI storage array is experiencing storage access performance issue. They are interested in deploying HPE 3PAR Storeserv with 16GB /S FC end to-end to improve the performance to the minimal changes to the environment. The existing environment consists of these HPE products

- * HPE C7000 Blade system platinum blade enclosure with HP virtual connect Flex 10 interconnect modules.
- * Configuration of HPE Proliant Gen8 and Gen9 blade servers
- * HPE 2920 Switches

Which HPE products must be included to support new HPE 3PAR Storeserv?(Select two)

- A. HPE B-Series 16GB SAN switch for HPE Blade system C-class series
- B. HPE 16GB/s Fibre channel HBA for Blade servers
- C. HP 5900CP switch series with 16GB/S SFP+ Modules
- D. HPE Flex fabric 20GB,2-Port 630 FLB adapter

E. HPE Virtual connect Flex fabric 20/40 f8 modules

Answer: AB

NEW QUESTION 19

- (Exam Topic 2)

When using a HPE 3PAR StoreServ array to enable a user to apply array-based data services to specific application and VM's. What is the benefit of implementing VM-level gradually of Volts?

- A. Data sprawls eliminated by performing the migration functions at the array level using 3PAR HPE Dynamic Optimization
- B. Efficiency is maintained by reclaiming space from deleted or migrated VMs using capabilities built into the storage ASIC
- C. Performing is accelerated by detecting and moving the most frequently –accessed VMs into the fast class tier
- D. Performance is accelerated by leveraging the deduplication capabilities built into the storage ASIC

Answer: B

NEW QUESTION 20

- (Exam Topic 2)

Which storage sizing tool, designed specifically for the HPE 3PAR StoreServ environment, shows the expected deduplication ratio based on actual data analysis of the customer's current environment?

- A. NinjaCrawler
- B. StoreVista
- C. NinjaThin
- D. NinjaStars

Answer: D

NEW QUESTION 21

.....

Thank You for Trying Our Product

We offer two products:

1st - We have Practice Tests Software with Actual Exam Questions

2nd - Questions and Answers in PDF Format

HPE0-J68 Practice Exam Features:

- * HPE0-J68 Questions and Answers Updated Frequently
- * HPE0-J68 Practice Questions Verified by Expert Senior Certified Staff
- * HPE0-J68 Most Realistic Questions that Guarantee you a Pass on Your FirstTry
- * HPE0-J68 Practice Test Questions in Multiple Choice Formats and Updatesfor 1 Year

100% Actual & Verified — Instant Download, Please Click
[Order The HPE0-J68 Practice Test Here](#)