

# Microsoft

## Exam Questions AZ-801

Configuring Windows Server Hybrid Advanced Services



**NEW QUESTION 1**

- (Exam Topic 3)

You have a three-node failover cluster.

You need to run pre-scripts and post-scripts when Cluster-Aware Updating (CAU) runs. The solution must minimize administrative effort.

What should you use?

- A. Scheduled tasks
- B. Run profiles
- C. Azure Functions
- D. Windows Server Update Services (WSUS)

**Answer: B**

**NEW QUESTION 2**

- (Exam Topic 3)

You have a server that runs Windows Server. The server is configured to encrypt all incoming traffic by using a connection security rule.

You need to ensure that Server1 can respond to the unencrypted tracert commands initiated from computers on the same network.

What should you do from Windows Defender Firewall with Advanced Security?

- A. From the IPsec Settings, configure IPsec defaults.
- B. Create a new custom outbound rule that allows ICMPv4 protocol connections for all profiles.
- C. Change the Firewall state of the Private profile to Off.
- D. From the IPsec Settings, configure IPsec exemptions.

**Answer: D**

**NEW QUESTION 3**

- (Exam Topic 3)

Your network contains an Active Directory Domain Services (AD DS) domain. The domain contains two servers named Server1 and Server2 that run Windows Server.

You need to ensure that you can use the Computer Management console to manage Server2. The solution must use the principle of least privilege.

Which two Windows Defender Firewall with Advanced Security rules should you enable on Server2? Each correct answer presents part of the solution.

NOTE: Each correct selection is worth one point.

- A. the COM+ Network Access (DCOM-In) rule
- B. all the rules in the Remote Event Log Management group
- C. the Windows Management Instrumentation (WMI-In) rule
- D. the COM+ Remote Administration (DCOM-In) rule
- E. the Windows Management Instrumentation (DCOM-In) rule

**Answer: AB**

**Explanation:**

Reference:

<https://docs.microsoft.com/en-us/windows-server/administration/server-manager/configure-remote-management>

**NEW QUESTION 4**

- (Exam Topic 3)

You have an Azure virtual machine named VM1 that runs Windows Server. VM1 has boot diagnostics configured to use a managed storage account.

You are troubleshooting connectivity issue on VM1.

You need to run a PowerShell cmdlet on VM1 by using the Azure Serial Console.

Which four actions should you perform in sequence? To answer, move the appropriate actions from the list of actions to the answer area and arrange them in the correct order.

**Actions**

- From the Azure portal, configure the Boot diagnostics settings for VM1 to use a custom storage account.
- From the Azure portal, open the Run command blade.
- From the Azure portal, open the Serial console blade of VM1.
- From the Azure portal, enable just in time (JIT) VM access to VM1.
- From the Serial console, run `ch -si 1` and sign in by using a local account.
- From the Serial console, run `cmd`.

**Answer Area**

**Solution:**

Graphical user interface, text, application, email Description automatically generated

Reference:

<https://docs.microsoft.com/en-us/troubleshoot/azure/virtual-machines/serial-console-overview> <https://docs.microsoft.com/en-us/troubleshoot/azure/virtual-machines/serial-console-windows>

Does this meet the goal?

- A. Yes
- B. No

**Answer: A**

**NEW QUESTION 5**

- (Exam Topic 3)

You have an on-premises server named Server1 that runs Windows Server. You need to perform an on-demand backup of the files on Server 1 by using Azure Backup.

Which five actions should you perform in sequence? To answer, move the appropriate actions from the list of actions to the answer area and arrange them in the correct order.

**Solution:**

A picture containing text Description automatically generated

Does this meet the goal?

- A. Yes
- B. No

**Answer: A**

**NEW QUESTION 6**

- (Exam Topic 3)

Your network contains an Active Directory Domain Services (AD DS) domain. The domain contains a failover cluster named Cluster1.

You need to configure Cluster-Aware Updating (CAU) on the cluster by using Windows Admin Center (WAC).

Which three actions should you perform in sequence? To answer, move the appropriate actions from the list of actions to the answer area and arrange them in the correct order.

**Solution:**

Does this meet the goal?

- A. Yes
- B. No

**Answer:** A

**NEW QUESTION 7**

- (Exam Topic 3)

Your network contains an Active Directory Domain Services (AD DS) domain. The domain contains the servers shown in the following table.

Name	Operating system	Server role
Server1	Windows Server 2019	DHCP Server
Server2	Windows Server 2022	DHCP Server
Server3	Windows Server 2019	File Server

Server3 contains a share named Share1.

On Server1, DHCP has the following configurations:

Conflict detection attempts: 3

An IPv4 scope named Scope1 that has the following settings:

\* 1. Address Pool: 172.16.10.100 - 172.16.10.130

\* 2. Address Leases:

- 172.16.10.100 computer1.contoso.com

- 172.16.10.101 computer2.contoso.com

Reservations: 172.16.10.101 computer2.contoso.com Policies: Policy1

You perform the following actions:

> On Server1, you run

Export-DhcpServer -File \\Server3\Share1\File1.xml.

> On Server2, you run

Import-DhcpServer -File \\Server3\Share1\File1.xml

-BackupPath \\Server3\Share1.

For each of the following statements, select Yes if the statement is true. Otherwise, select No. NOTE: Each correct selection is worth one point.

**Answer Area**

Statements	Yes	No
On Server2, Conflict detection attempts is set to 3.	<input type="radio"/>	<input type="radio"/>
On Server2, there is a reservation for computer2.contoso.com.	<input type="radio"/>	<input type="radio"/>
On Server2, Policy1 is applied to Scope1.	<input type="radio"/>	<input type="radio"/>

**Solution:**

Text Description automatically generated

Reference:

<https://docs.microsoft.com/en-us/powershell/module/dhcpserver/export-dhcpserver?view=windowsserver2022-p> <https://docs.microsoft.com/en-us/powershell/module/dhcpserver/import-dhcpserver?view=windowsserver2022-p>

Does this meet the goal?

- A. Yes
- B. No

**Answer:** A

**NEW QUESTION 8**

- (Exam Topic 3)

Your on-premises network contains two subnets. The subnets contain servers that run Windows Server as shown in the following table.

Name	IP address
Server1	192.168.1.10
Server2	192.168.0.250
Server3	192.168.0.240
Server4	192.168.0.10

Server4 has the following IP configurations: Ethernet adapter Ethernet:

Connection-specific DNS Suffix . . . :

IPv4 Address . . . . . : 192.168.0.10

Subnet Mask . . . . . : 255.255.255.0

Default Gateway . . . . . : 192.168.0.1

From Server4, you can ping Server1 and Server2 successfully. When you ping Server3, you get a Request timed out response.

From Server2, you can ping Server1 and Server3 successfully.

The misconfiguration of which component on Server3 can cause the Request timed out response?

- A. default gateway
- B. IP address
- C. subnet mask
- D. DNS server

Answer: C

**NEW QUESTION 9**

- (Exam Topic 3)

Your network contains an Active Directory Domain Services (AD DS) domain. You need to implement a solution that meets the following requirements:

- Ensures that the members of the Domain Admins group are allowed to sign in only to domain controllers
- Ensures that the lifetime of Kerberos Ticket Granting Ticket (TGT) for the members of the Domain Admins group is limited to one hour

Which three actions should you perform in sequence? To answer, move the appropriate actions from the list of actions to the answer area and arrange them in the correct order.

Actions	Answer Area
Create a Dynamic Access Control central access policy.	
Configure the Kerberos Policy settings for the Default Domain Policy Group Policy Object (GPO).	
Create a Dynamic Access Control claim type.	
Create an authentication policy.	
Assign the authentication policy silo to user and computer accounts.	
Create an authentication policy silo.	

**Solution:**

Graphical user interface, text, application, email Description automatically generated

Reference:

<https://docs.microsoft.com/en-us/windows-server/identity/ad-ds/manage/how-to-configure-protected-accounts>

Does this meet the goal?

- A. Yes
- B. No

Answer: A

**NEW QUESTION 10**

- (Exam Topic 3)

You have an Azure virtual machine named VM1 that runs Windows Server. You plan to deploy a new line-of-business (LOB) application to VM1. You need to ensure that the application can create child processes. What should you configure on VM1?

- A. Microsoft Defender Credential Guard
- B. Microsoft Defender Application Control
- C. Microsoft Defender SmartScreen
- D. Exploit protection

Answer: A

**Explanation:**

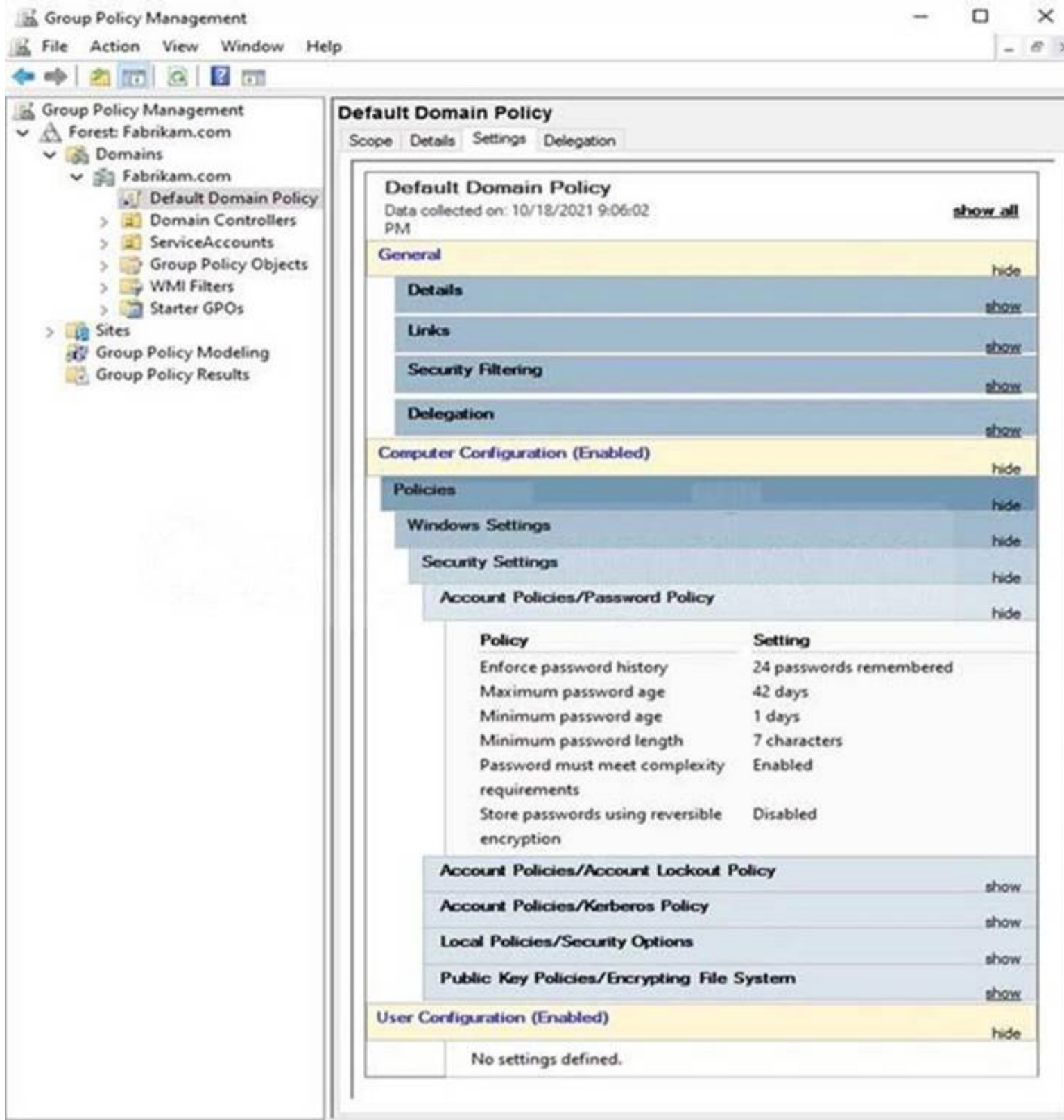
Reference:

<https://docs.microsoft.com/en-us/microsoft-365/security/defender-endpoint/customize-exploit-protection?view=>

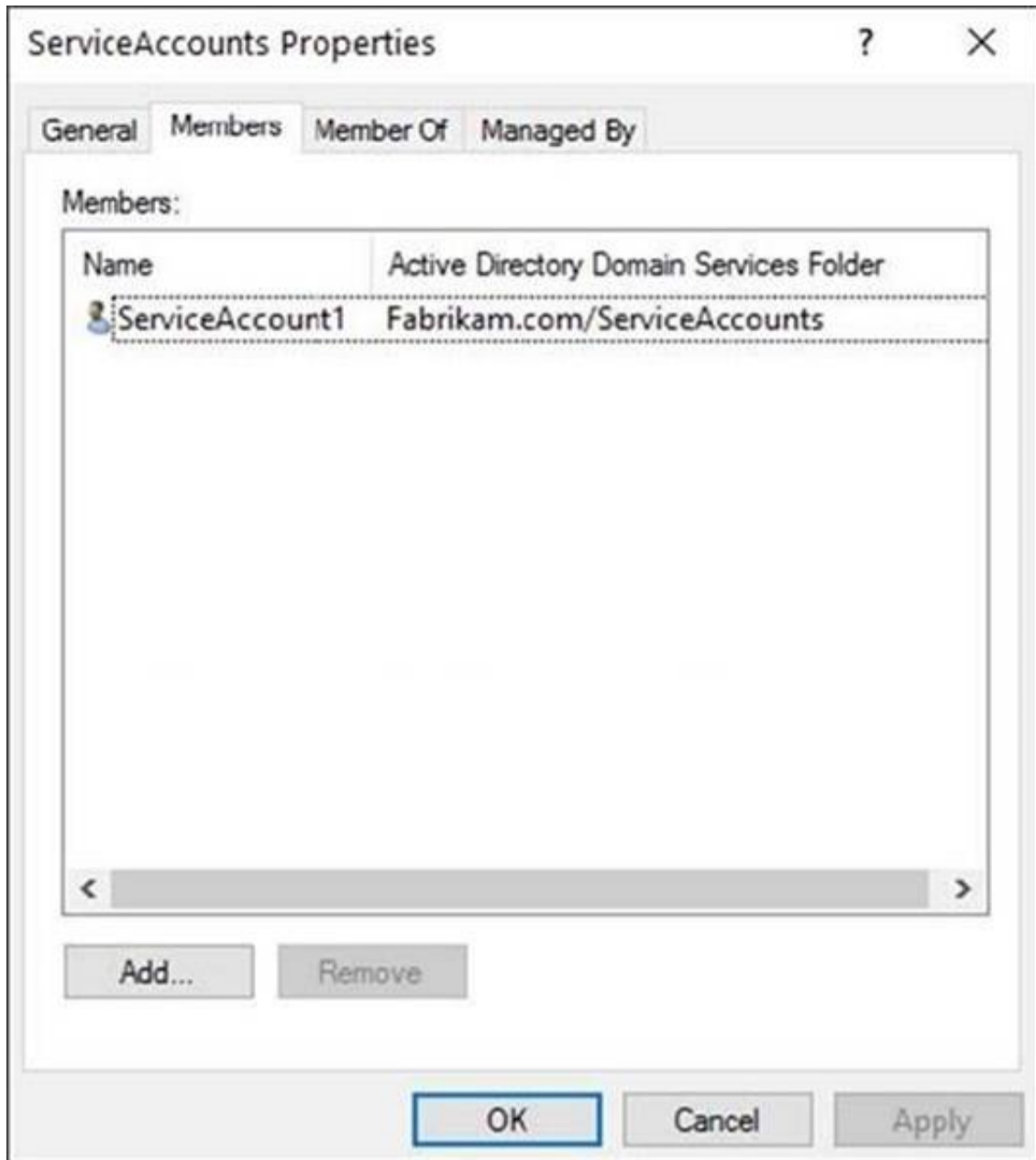
**NEW QUESTION 11**

- (Exam Topic 3)

The Default Domain Policy Group Policy Object (GPO) is shown in the GPO exhibit. (Click the GPO tab.)



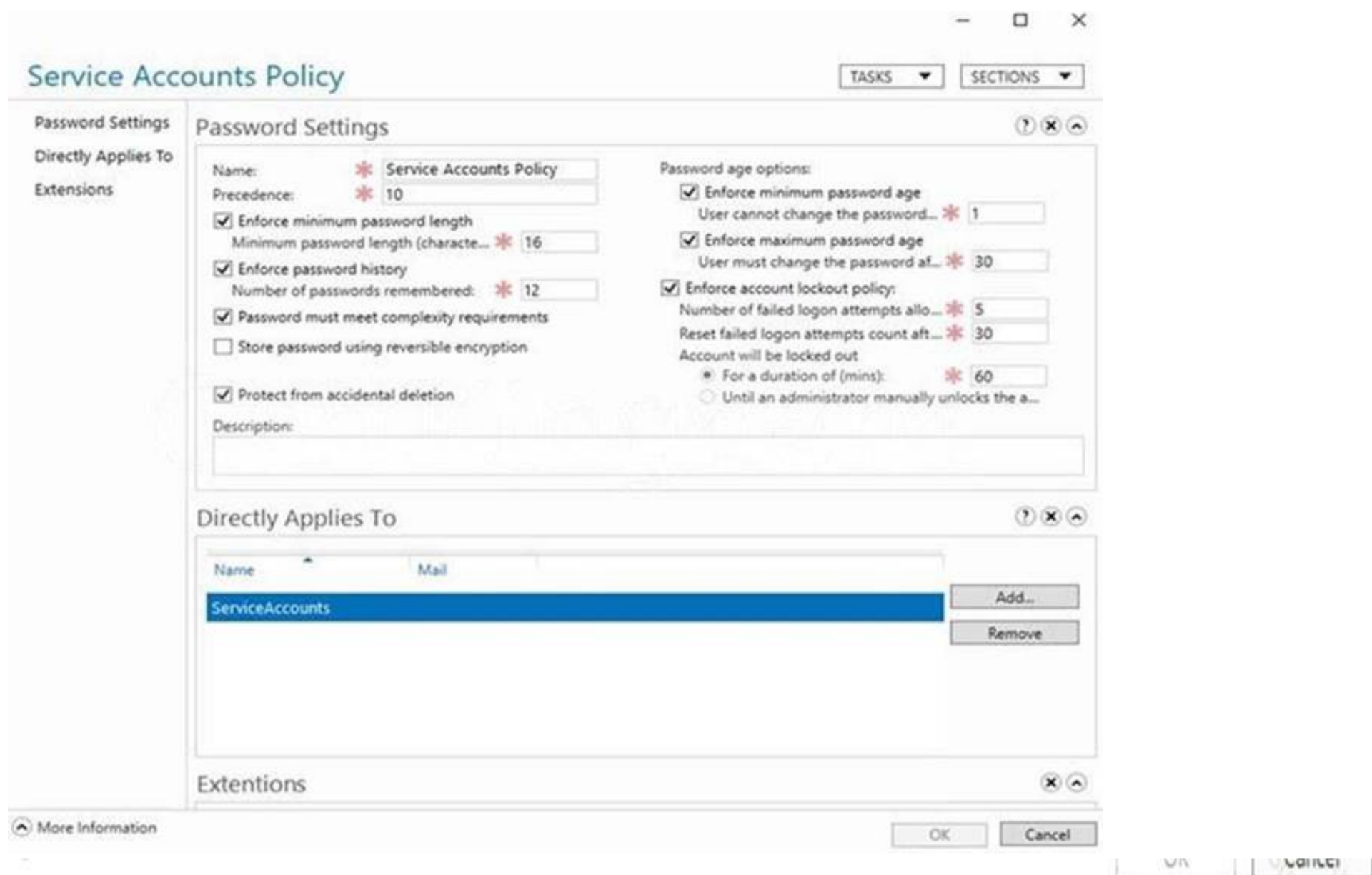
The members of a group named Service Accounts are shown in the Group exhibit. (Click the Group tab.)



An organizational unit (OU) named ServiceAccounts is shown in the OU exhibit. (Click the OU tab.)



You create a Password Settings Object (PSO) as shown in the PSO exhibit. (Click the PSO tab.)



For each of the following statements, select Yes if the statement is true. Otherwise, select No. NOTE: Each correct selection is worth one point.

Statements	Yes	No
The password of ServiceAccount1 must be at least 16 characters long.	<input type="radio"/>	<input type="radio"/>
The password of ServiceAccount2 must be at least 16 characters long.	<input type="radio"/>	<input type="radio"/>
Accounts that have the Service Accounts Policy applied can change their password to P@\$w0rd1.	<input type="radio"/>	<input type="radio"/>

**Solution:**

A screenshot of a computer Description automatically generated with medium confidence

Reference:

<https://docs.microsoft.com/en-us/windows-server/identity/ad-ds/get-started/adac/introduction-to-active-directory>

Does this meet the goal?

- A. Yes
- B. No

**Answer: A**

**NEW QUESTION 12**

- (Exam Topic 2)

You need to meet the technical requirements for Cluster2.

Which four actions should you perform in sequence before you can enable replication? To answer, move the appropriate actions from the list of actions to the answer area and arrange them in the correct order.

**Actions**

- Create an Azure Recovery Services vault.
- Install Azure Connected Machine agents.
- Install and register Azure Site Recovery Providers.
- Create and associate replication policies.
- Create a Hyper-V site.

**Answer Area**

**Solution:**



Text Description automatically generated

Reference:

<https://docs.microsoft.com/en-us/azure/site-recovery/hyper-v-azure-tutorial>

Does this meet the goal?

- A. Yes
- B. No

**Answer:** A

### **NEW QUESTION 13**

- (Exam Topic 1)

You are planning the migration of Archive1 to support the on-premises migration plan.

What is the minimum number of IP addresses required for the node and cluster roles on Cluster3?

- A. 2
- B. 3
- C. 4
- D. 5

**Answer:** B

**Explanation:**

One IP for each of the two nodes in the cluster and one IP for the cluster virtual IP (VIP).

### **NEW QUESTION 14**

.....

## **Thank You for Trying Our Product**

### **We offer two products:**

1st - We have Practice Tests Software with Actual Exam Questions

2nd - Questions and Answers in PDF Format

### **AZ-801 Practice Exam Features:**

- \* AZ-801 Questions and Answers Updated Frequently
- \* AZ-801 Practice Questions Verified by Expert Senior Certified Staff
- \* AZ-801 Most Realistic Questions that Guarantee you a Pass on Your FirstTry
- \* AZ-801 Practice Test Questions in Multiple Choice Formats and Updatesfor 1 Year

**100% Actual & Verified — Instant Download, Please Click**  
**[Order The AZ-801 Practice Test Here](#)**