

Microsoft

Exam Questions AZ-400

Microsoft Azure DevOps Solutions



NEW QUESTION 1

SIMULATION - (Topic 4)

You need to create a notification if the peak average response time of an Azure web app named az400-9940427-main is more than five seconds when evaluated during a five- minute period. The notification must trigger the "https://contoso.com/notify" webhook.
 To complete this task, sign in to the Microsoft Azure portal.

Solution:

- * 1. Open Microsoft Azure Portal
- * 2. Log into your Azure account and go to App Service and look under Monitoring then you will see Alert.
- * 3. Select Add an alert rule
- * 4. Configure the alert rule as per below and click Ok. Source: Alert on Metrics
 Resource Group: az400-9940427-main Resource: az400-9940427-main Threshold: 5
 Period: Over the last 5 minutes Webhook: https://contoso.com/notify

References:

<https://azure.microsoft.com/es-es/blog/webhooks-for-azure-alerts/>

Does this meet the goal?

- A. Yes
- B. No

Answer: A

NEW QUESTION 2

- (Topic 4)

Note: This Question Is part of a series of questions that present the same scenario. Each question in the series contains a unique solution that might meet the stated goals. Some question sets might have more than one correct solution, while others might not have a correct solution.

After you answer a question in this section, you will NOT be able to return to it. As a result these questions will not appear in the review screen.

You company has a prefect in Azure DevOps for a new web application.

You need to ensure that when code is checked in, a build runs automatically.

Solution: From the Triggers tab of the build pipeline, you selected Batch changes while a build is in progress

Does this meet the goal?

- A. Yes
- B. No

Answer: B

NEW QUESTION 3

- (Topic 4)

You have an Azure subscription linked to a tenant in Microsoft Azure Active Directory (Azure AD), part of Entrap. The tenant is licensed for Azure AD Premium Plan 1.

A security review indicates that too many users have privileged access to resources. You need to deploy a privileged access management solution that meets the following requirements:

- Enforces time limits on the use of privileged access
- Requires approval to activate privileged access
- Minimizes costs

What should you do first?

- A. Configure alerts for the activation of privileged roles.
- B. Enforce Azure Multi-Factor Authentication (MFA) for role activation.
- C. Configure notifications when privileged roles are activated.
- D. Upgrade the license of the Azure AD tenant.

Answer: D

NEW QUESTION 4

- (Topic 4)

Note: This question is part of a series of questions that present the same scenario. Each question in the series contains a unique solution that might meet the stated goals. Some question sets might have more than one correct solution, while others might not have a correct solution.

After you answer a question in this section, you will NOT be able to return to it. As a result, these questions will not appear in the review screen.

You plan to update the Azure DevOps strategy of your company.

You need to identify the following issues as they occur during the company's development process:

- ? Licensing violations
- ? Prohibited libraries

Solution: You implement continuous integration. Does this meet the goal?

- A. Yes
- B. No

Answer: A

Explanation:

WhiteSource is the leader in continuous open source software security and compliance management. WhiteSource integrates into your build process, irrespective of your programming languages, build tools, or development environments. It works automatically, continuously, and silently in the background, checking the security, licensing, and quality of your open source components against WhiteSource constantly-updated denitive database of open source repositories.

Reference: <https://azuredevopslabs.com/labs/vstsextend/whitesource/>

NEW QUESTION 5

- (Topic 4)

You administer an Azure DevOps project that includes package feeds.

You need to ensure that developers can unlist and deprecate packages. The solution must use the principle of least privilege.

Which access level should you grant to the developers?

- A. Collaborator
- B. Contributor
- C. Owner

Answer: B

Explanation:

Feeds have four levels of access: Owners, Contributors, Collaborators, and Readers. Owners can add any type of identity-individuals, teams, and groups-to any access level.

Permission	Reader	Collaborator	Contributor	Owner
List and restore/install packages	✓	✓	✓	✓
Save packages from upstream sources		✓	✓	✓
Push packages			✓	✓
Unlist/deprecate packages			✓	✓
Promote a package to a view			✓	✓
Delete/unpublish package				✓
Edit feed permissions				✓

Reference:
<https://docs.microsoft.com/en-us/azure/devops/artifacts/feeds/feed-permissions>

NEW QUESTION 6

- (Topic 4)

You plan to use Terraform to deploy an Azure resource group.

You need to install the required frameworks to support the planned deployment. Which two frameworks should you install? Each correct answer presents part of the solution.

NOTE: Each correct selection is worth one point.

- A. Vault
- B. Terratest
- C. Node.js
- D. Yeoman
- E. Tiller

Answer: BD

Explanation:

You can use the combination of Terraform and Yeoman. Terraform is a tool for creating infrastructure on Azure. Yeoman makes it easy to create Terraform modules.

Terratest provides a collection of helper functions and patterns for common infrastructure testing tasks, like making HTTP requests and using SSH to access a specific virtual machine. The following list describes some of the major advantages of using Terratest:

? Convenient helpers to check infrastructure - This feature is useful when you want to verify your real infrastructure in the real environment.

? Organized folder structure - Your test cases are organized clearly and follow the standard Terraform module folder structure.

? Test cases are written in Go - Many developers who use Terraform are Go developers. If you're a Go developer, you don't have to learn another programming language to use Terratest.

? Extensible infrastructure - You can extend additional functions on top of Terratest, including Azure-specific features.

Reference:

<https://docs.microsoft.com/en-us/azure/developer/terraform/create-base-template-using-yeoman>

<https://docs.microsoft.com/en-us/azure/developer/terraform/test-modules-using-terratest>

NEW QUESTION 7

- (Topic 4)

Note: This question is part of a series of questions that present the same scenario. Each question in the series contains a unique solution that might meet the stated goals. Some question sets might have more than one correct solution, while others might not have a correct solution.

After you answer a question in this section, you will NOT be able to return to it. As a result, these questions will not appear in the review screen.

You manage a project in Azure DevOps.

You need to prevent the configuration of the project from changing over time. Solution: Add a code coverage step to the build pipelines.

Does this meet the goal?

- A. Yes
- B. No

Answer: B

Explanation:

Instead implement Continuous Assurance for the project.

Reference:

<https://azsk.azurewebsites.net/04-Continuous-Assurance/Readme.html>

NEW QUESTION 8

- (Topic 4)

Your company has a project in Azure DevOps.

You need to ensure that when there are multiple builds pending deployment only the most recent build is deployed.

What should you use?

- A. deployment queue settings
- B. deployment conditions
- C. release gates
- D. pull request triggers

Answer: A

Explanation:

References: <https://docs.microsoft.com/en-us/azure/devops/pipelines/process/stages?tabs=classic&view=azure-devops#queuing-policies>

NEW QUESTION 9

- (Topic 4)

You are creating a dashboard in Azure Boards.
 You need to visualize the time from when work starts on a work item until the work item is closed.
 Which type of widget should you use?

- A. cycle time
- B. velocity
- C. cumulative flow
- D. lead time

Answer: D

NEW QUESTION 10

DRAG DROP - (Topic 4)

You are creating a container for an ASP.NET Core app.
 You need to create a Dockerfile file to build the image. The solution must ensure that the size of the image is minimized.
 How should you configure the file? To answer, drag the appropriate values to the correct targets. Each value must be used once, more than once, or not at all. You may need to drag the split bar between panes or scroll to view content.
 NOTE: Each correct selection is worth one point.

Values	Answer Area
dotnet publish -c Release -o out	FROM <input type="text"/> As build-env
dotnet restore	COPY . /app/
microsoft/dotnet:2.2-aspnetcore-runtime	WORKDIR /app
Microsoft/dotnet:2.2-sdk	RUN <input type="text"/>
	FROM <input type="text"/>
	COPY --from=build-env /app/out /app
	WORKDIR /app
	ENTRYPOINT ["dotnet", "MvcMovie.dll"]

Solution:

Box 1: [microsoft.com/dotnet/sdk:2.3](https://mcr.microsoft.com/dotnet/sdk:2.3)

The first group of lines declares from which base image we will use to build our container on top of. If the local system does not have this image already, then docker will automatically try and fetch it. The mcr.microsoft.com/dotnet/core/sdk:2.1 comes packaged with the .NET core 2.1 SDK installed, so it's up to the task of building ASP .NET core projects targeting version 2.1

Box 2: dotnet restore

The next instruction changes the working directory in our container to be /app, so all commands following this one execute under this context.

COPY *.csproj ./ RUN dotnet restore

Box 3: [microsoft.com/dotnet/2.2-aspnetcore-runtime](https://mcr.microsoft.com/dotnet/2.2-aspnetcore-runtime)

When building container images, it's good practice to include only the production payload and its dependencies in the container image. We don't want the .NET core SDK included in our final image because we only need the .NET core runtime, so the dockerfile is written to use a temporary container that is packaged with the SDK called build-env to build the app.

Does this meet the goal?

- A. Yes
- B. No

Answer: A

NEW QUESTION 11

DRAG DROP - (Topic 4)

Your company has an Azure subscription named Subscription1. Subscription1 is associated to an Azure Active Directory tenant named contoso.com.
 You need to provision an Azure Kubernetes Services (AKS) cluster in Subscription1 and set the permissions for the cluster by using RBAC roles that reference the identities in contoso.com.

Which three objects should you create in sequence? To answer, move the appropriate objects from the list of objects to the answer area and arrange them in the correct order.

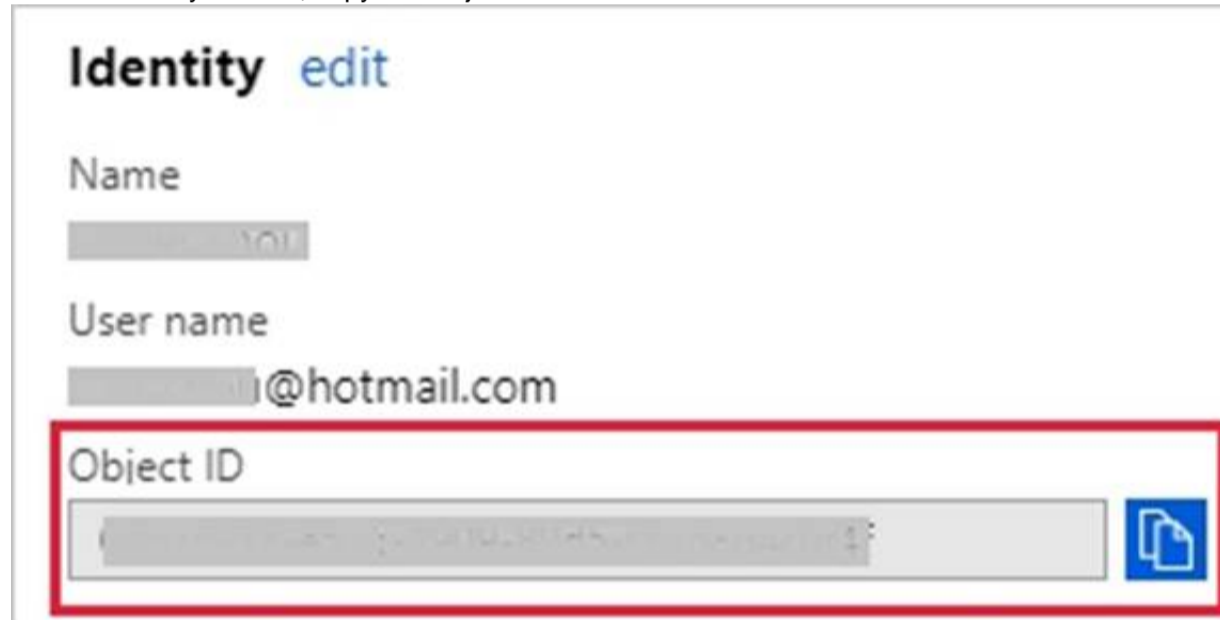
Answer Area

Objects

- a system-assigned managed identity
- a cluster
- an application registration in contoso.com
- an RBAC binding

Solution:

- Step 1: Create an AKS cluster
- Step 2: a system-assigned managed identity
- To create an RBAC binding, you first need to get the Azure AD Object ID.
- ? Sign in to the Azure portal.
- ? In the search field at the top of the page, enter Azure Active Directory.
- ? Click Enter.
- ? In the Manage menu, select Users.
- ? In the name field, search for your account.
- ? In the Name column, select the link to your account.
- ? In the Identity section, copy the Object ID.



Step 3: a RBAC binding

Does this meet the goal?

- A. Yes
- B. No

Answer: A

NEW QUESTION 12

- (Topic 4)

You are designing the development process for your company. You need to recommend a solution for continuous inspection of the company's code base to locate common code patterns that are known to be problematic. What should you include in the recommendation?

- A. Microsoft Visual Studio test plans
- B. Gradle wrapper scripts
- C. SonarCloud analysis
- D. the JavaScript task runner

Answer: C

Explanation:

SonarCloud is a cloud service offered by SonarSource and based on SonarQube. SonarQube is a widely adopted open source platform to inspect continuously the quality of source code and detect bugs, vulnerabilities and code smells in more than 20 different languages. Note: The SonarCloud Azure DevOps extension brings everything you need to have your projects analyzed on SonarCloud very quickly.

NEW QUESTION 13

- (Topic 4)

You plan to use a NuGet package in a project in Azure DevOps. The NuGet package is in a feed that requires authentication. You need to ensure that the project can restore the NuGet package automatically. What should the project use to automate the authentication?

- A. an Azure Automation account

- B. an Azure Artifacts Credential Provider
- C. an Azure Active Directory (Azure AD) account that has multi-factor authentication (MFA) enabled
- D. an Azure Active Directory (Azure AD) service principal D18912E1457D5D1DDCBD40AB3BF70D5D

Answer: B

Explanation:

The Azure Artifacts Credential Provider automates the acquisition of credentials needed to restore NuGet packages as part of your .NET development workflow. It integrates with MSBuild, dotnet, and NuGet(.exe) and works on Windows, Mac, and Linux. Any time you want to use packages from an Azure Artifacts feed, the Credential Provider will automatically acquire and securely store a token on behalf of the NuGet client you're using.

Reference:

<https://github.com/Microsoft/artifacts-credprovider>

NEW QUESTION 14

- (Topic 4)

You manage a project by using Azure Boards. You manage the project code by using GitHub.

You have three work items that have IDs of 456, 457, and 458.

You need to create a pull request that will be linked to all the work items. The solution must set the state of work item 456 to done.

What should you add to the commit message?

A)

```
Fixes #456, #457, #458
```

B)

```
Fixes #AB456, #AB457, #AB458
```

C)

```
#456, #457, #458  
Completed #456
```

D)

```
#AB456, #AB457, #AB458
```

- A. Option A
- B. Option B
- C. Option C
- D. Option D

Answer: D

NEW QUESTION 15

- (Topic 4)

You are automating the testing process for your company. You need to automate UI testing of a web application. Which framework should you use?

- A. JaCoco
- B. Playwright
- C. Xamarin.UITest
- D. Microsoft.CodeAnalysis

Answer: B

Explanation:

Performing user interface (UI) testing as part of the release pipeline is a great way of detecting unexpected changes, and need not be difficult. Selenium can be used to test your website during a continuous deployment release and test automation.

References:

<https://docs.microsoft.com/en-us/azure/devops/pipelines/test/continuous-test-selenium?view=azure-devops>

NEW QUESTION 16

DRAG DROP - (Topic 2)

You need to configure Azure Automation for the computer in Group7.

Which three actions should you perform in sequence? To answer, move the appropriate actions from the list of actions to the answer area and arrange them in the correct order.

Actions	Answer Area
Run the Import-AzureRmAutomationDscConfiguration Azure PowerShell cmdlet.	
Create a Desired State Configuration (DSC) configuration file that has an extension of .ps1.	
Run the New-AzureRmResourceGroupDeployment Azure PowerShell cmdlet.	⬅️ ⬆️
Run the Start-AzureRmAutomationDscCompilationJob Azure PowerShell cmdlet.	
Create an Azure Resource Manager template file that has an extension of .json.	

Solution:

Step 1: Create a Desired State Configuration (DSC) configuration file that has an extension of .ps1.
 Step 2: Run the Import-AzureRmAutomationDscConfiguration Azure Powershell cmdlet The Import-AzureRmAutomationDscConfiguration cmdlet imports an APS Desired State Configuration (DSC) configuration into Azure Automation. Specify the path of an APS script that contains a single DSC configuration.

Example:

```
PS C:\>Import-AzureRmAutomationDscConfiguration -AutomationAccountName "Contoso17"-ResourceGroupName "ResourceGroup01" -SourcePath "C:\DSC\client.ps1" - Force
```

This command imports the DSC configuration in the file named client.ps1 into the Automation account named Contoso17. The command specifies the Force parameter. If there is an existing DSC configuration, this command replaces it.

Step 3: Run the Start-AzureRmAutomationDscCompilationJob Azure Powershell cmdlet The Start-AzureRmAutomationDscCompilationJob cmdlet compiles an APS Desired State Configuration (DSC) configuration in Azure Automation.

References:

- <https://docs.microsoft.com/en-us/powershell/module/azurerm.automation/import-azurermautomationdscconfiguration>
- <https://docs.microsoft.com/en-us/powershell/module/azurerm.automation/start-azurermautomationdsccompilationjob>

Does this meet the goal?

- A. Yes
- B. No

Answer: A

NEW QUESTION 17

- (Topic 4)

After you answer a question in this section, you will NOT be able to return to it As a result, these questions will not appear in the review screen.

You use Azure Pipelines to build and test a React js application You have a pipeline that has a single job.

You discover that installing JavaScript packages from npm takes approximately five minutes each time you run the pipeline.

You need to recommend a solution to reduce the pipeline execution time. Solution: You recommend enabling pipeline caching.

Does this meet the goal?

- A. Yes
- B. No

Answer: A

Explanation:

npm-cache is a command line utility that caches dependencies installed via npm, bower, jspm and composer.

It is useful for build processes that run [npm|bower|composer|jspm] install every time as part of their build process. Since dependencies don't change often, this often means slower build times. npm-cache helps alleviate this problem by caching previously installed dependencies on the build machine.

Reference: <https://www.npmjs.com/package/npm-cache>

NEW QUESTION 18

- (Topic 4)

You have a web app hosted on Azure App Service. The web app stores data in an Azure SQL database.

You need to generate an alert when there are 10,000 simultaneous connections to the database. The solution must minimize development effort.

Which option should you select in the Diagnostics settings of the database?

- A. Send to Log Analytics
- B. Stream to an event hub
- C. Archive to a storage account

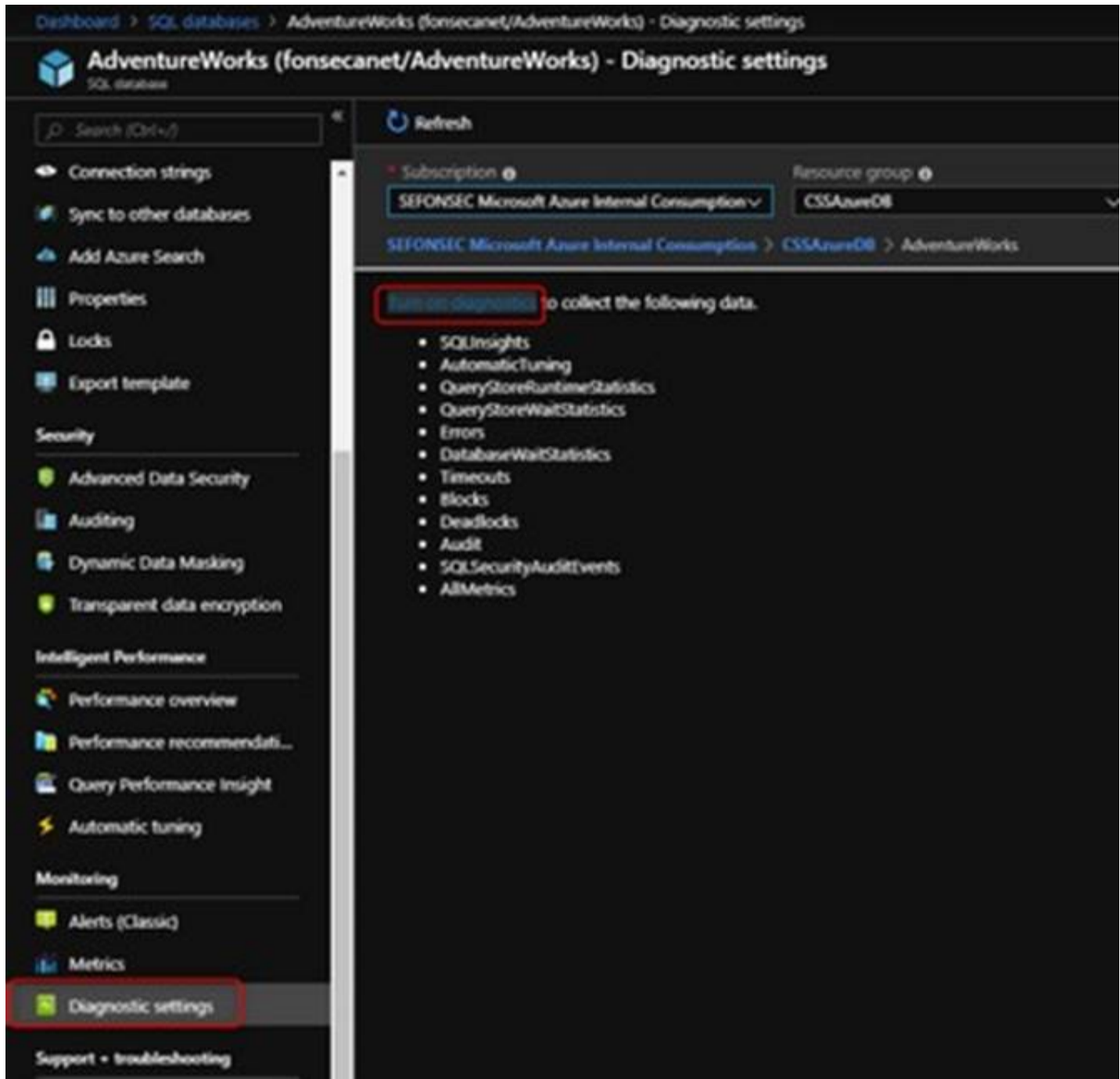
Answer: A

Explanation:

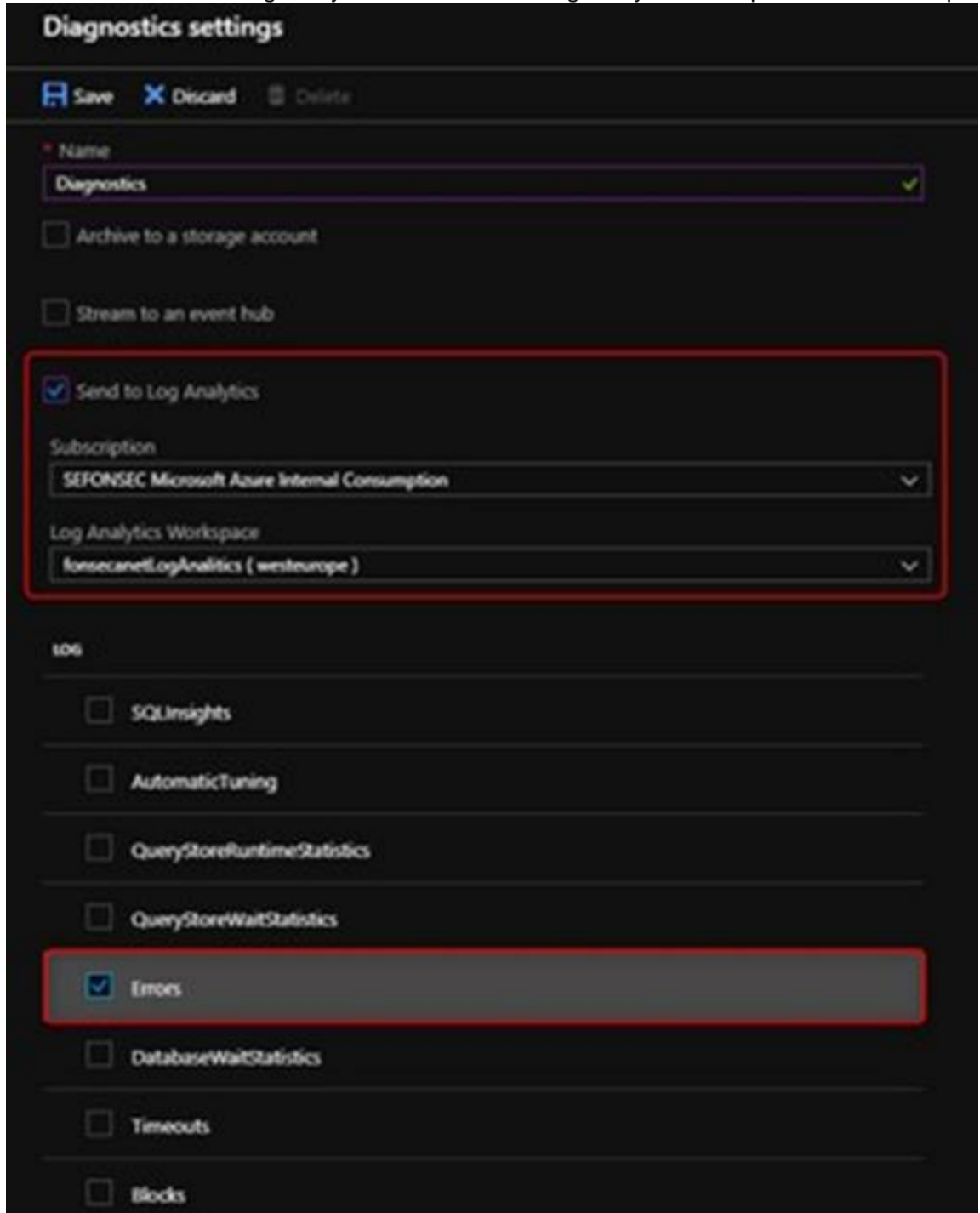
ENABLE DIAGNOSTICS TO LOG ANALYTICS

This configuration is done PER DATABASE

* 1. Click on Diagnostics Settings and then Turn On Diagnostics



* 2. Select to Send to Log Analytics and select the Log Analytics workspace. For this sample I will selected only Errors



Graphical user interface Description automatically generated with medium confidence

Reference:

<https://techcommunity.microsoft.com/t5/azure-database-support-blog/azure-sql-db-and-log-analytics-better-together-part-1/ba-p/794833>

NEW QUESTION 19

- (Topic 4)

Your company is building a mobile app that targets Android devices and OS devices. Your team uses Azure DevOps to manage all work items and release cycles. You need to recommend a solution to perform the following tasks:

- Collect crash reports for issue analysis
- Distribute beta releases to your testers.
- Get user feedback on the functionality of new apps. What should you include in the recommendation?

- A. Jenkins integration
- B. Azure Application Insights widgets
- C. the Microsoft Test & Feedback extension
- D. Microsoft Visual Studio App Center integration

Answer: D

Explanation:

The "Exploratory Testing" extension is now "Test & Feedback" and is now Generally Available.

Anyone can now test web apps and give feedback, all directly from the browser on any platform: Windows, Mac, or Linux. Available for Google Chrome and Mozilla Firefox (required version 50.0 or above) currently. Support for Microsoft Edge is in the pipeline and will be enabled once Edge moves to a Chromium-compatible web platform.

References:

<https://marketplace.visualstudio.com/items?itemName=ms.vss-exploratorytesting-web>

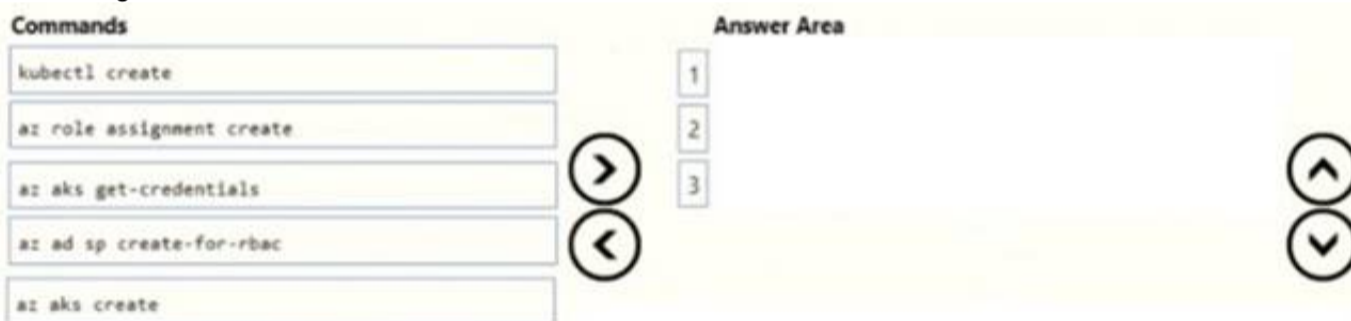
NEW QUESTION 20

DRAG DROP - (Topic 4)

You plan to use Azure Kubernetes Service (AKS) to host containers deployed from images hosted in a Docker Trusted Registry.

You need to recommend a solution for provisioning and connecting to AKS. The solution must ensure that AKS is RBAC-enabled and uses a custom service principal.

Which three commands should you recommend be run in sequence? To answer, move the appropriate commands from the list of commands to the answer area and arrange them in the correct order.



Solution:

Step 1 : az acr create

An Azure Container Registry (ACR) can also be created using the new Azure CLI. az acr create

```
--name <REGISTRY_NAME>
--resource-group <RESOURCE_GROUP_NAME>
--sku Basic
```

Step 2: az ad sp create-for-rbac

Once the ACR has been provisioned, you can either enable administrative access (which is okay for testing) or you create a Service Principal (sp) which will provide a client_id and a client_secret.

```
az ad sp create-for-rbac
--scopes
/subscriptions/<SUBSCRIPTION_ID>/resourcegroups/<RG_NAME>/providers/Microsoft.ContainerRegistry/registries/<REGISTRY_NAME>
--role Contributor
--name <SERVICE_PRINCIPAL_NAME>
```

Step 3: kubectl create

Create a new Kubernetes Secret.

```
kubectl create secret docker-registry <SECRET_NAME>
--docker-server <REGISTRY_NAME>.azurecr.io
--docker-email <YOUR_MAIL>
--docker-username=<SERVICE_PRINCIPAL_ID>
--docker-password <YOUR_PASSWORD>
```

References:

<https://thorsten-hans.com/how-to-use-private-azure-container-registry-with-kubernetes>

Does this meet the goal?

- A. Yes
- B. No

Answer: A

NEW QUESTION 21

- (Topic 4)

Your company uses Azure DevOps for the build pipelines and deployment pipelines of Java-based projects.

You need to recommend a strategy for managing technical debt. Which action should you include in the recommendation?

- A. Configure post-deployment approvals in the deployment pipeline.
- B. Integrate Azure DevOps and Sonar Rube.
- C. Integrate Azure DevOps and Azure Dev Test Labs.

Answer: B

Explanation:

You can manage technical debt with Sonar Rube and Azure DevOps.

Note: Technical debt is the set of problems in a development effort that make forward progress on customer value inefficient. Technical debt saps productivity by making code hard to understand, fragile, time-consuming to change, difficult to validate, and creates unplanned work that blocks progress. Unless they are managed, technical debt can accumulate and hurt the overall quality of the software and the productivity of the development team in the long term

SonarQube an open source platform for continuous inspection of code quality to perform automatic reviews with static analysis of code to:

- ? Detect Bugs
- ? Code Smells
- ? Security Vulnerabilities
- ? Centralize Quality
- ? What's covered in this lab

Reference: <https://azuredevopslabs.com/labs/vstsextend/sonarqube/>

NEW QUESTION 22

- (Topic 4)

You have a private distribution group that contains provisioned and unprovisioned devices.

You need to distribute a new iOS application to the distribution group by using Microsoft Visual Studio App Center.

What should you do?

- A. Request the Apple ID associated with the user of each device.
- B. Register the devices on the Apple Developer portal.
- C. Create an active subscription in App Center Test.
- D. Add the device owner to the organization in App Center.

Answer: B

Explanation:

When releasing an iOS app signed with an ad-hoc or development provisioning profile, you must obtain tester's device IDs (UDIDs), and add them to the provisioning profile before compiling a release. When you enable the distribution group's Automatically manage devices setting, App Center automates the before mentioned operations and removes the constraint for you to perform any manual tasks. As part of automating the workflow, you must provide the user name and password for your Apple ID and your production certificate in a .p12 format.

App Center starts the automated tasks when you distribute a new release or one of your testers registers a new device. First, all devices from the target distribution group will be registered, using your Apple ID, in your developer portal and all provisioning profiles used in the app will be generated with both new and existing device ID. Afterward, the newly generated provisioning profiles are downloaded to App Center servers.

References:

<https://docs.microsoft.com/en-us/appcenter/distribution/groups>

NEW QUESTION 23

- (Topic 4)

You have the following Azure policy.

```

if: (
  allof: [
    {
      "field": "type",
      "equals": "Microsoft.Storage/storageAccounts"
    },
    {
      "field": "Microsoft.Storage/storageAccounts/supportsHttpsTrafficOnly",
      "notEquals": "true"
    }
  ]
),
then: {
  effect: "deny"
}

```

You assign the policy to the Tenant root group. What is the effect of the policy?

- A. prevents all http traffic to existing Azure Storage accounts
- B. ensures that all traffic to new Azure Storage accounts is encrypted
- C. prevents HTTPS traffic to new Azure Storage accounts when the accounts are accessed over the Internet
- D. ensures that all data for new Azure Storage accounts is encrypted at rest

Answer: B

Explanation:

Denies non HTTPS traffic.

NEW QUESTION 24

- (Topic 4)

Your company has a release pipeline in an Azure DevOps project.

You plan to deploy to an Azure Kubernetes Services (AKS) cluster by using the Helm package and deploy task.

You need to install a service in the AKS namespace for the planned deployment. Which service should you install?

- A. Azure Container Registry
- B. Chart
- C. Kubectl
- D. Tiller

Answer: D

Explanation:

Before you can deploy Helm in an RBAC-enabled AKS cluster, you need a service account and role binding for the Tiller service.

Reference:

<https://docs.microsoft.com/en-us/azure/aks/kubernetes-helm>

NEW QUESTION 25

DRAG DROP - (Topic 4)

You have an app named App1. You have a Log Analytics workspace named Workspace 1 that contains two tables named Events and Logs. App1 manages events in multiple locations and writes logs to Workspace1.

You need to query Workspace1 for all log entries related to Asia that occurred during the last two days.

In which order should you arrange the query statements? To answer, move all statements from the list of statements to the answer area and arrange them in the correct order.

Statements

Logs

| where Timestamp > ago(2d)

| where continent == 'Asia'

| join (Events

) on RequestId

Answer Area

>
<

↑
↓

Solution:

Statements

Logs

| where Timestamp > ago(2d)

| where continent == 'Asia'

| join (Events

) on RequestId

Answer Area

| join (Events

Logs

| where Timestamp > ago(2d)

| where continent == 'Asia'

) on RequestId

>
<

↑
↓

Does this meet the goal?

- A. Yes
- B. No

Answer: A

NEW QUESTION 26

- (Topic 4)

Your company « concerned that when developers introduce open source Libraries, it creates licensing compliance issues.

You need to add an automated process to the build pipeline to detect when common open source libraries are added to the code base.

What should you use?

- A. Code Style
- B. Microsoft Visual SourceSafe
- C. Black Duck
- D. Jenkins

Answer: C

Explanation:

Secure and Manage Open Source Software

Black Duck helps organizations identify and mitigate open source security, license compliance and code-quality risks across application and container portfolios.

Black Duck Hub and its plugin for Team Foundation Server (TFS) allows you to automatically find and fix open source security vulnerabilities during the build process, so you can proactively manage risk. The integration allows you to receive alerts and fail builds when any Black Duck Hub policy violations are met.

Note: WhiteSource would also be a good answer, but it is not an option here. References:

<https://marketplace.visualstudio.com/items?itemName=black-duck-software.hub-tfs>

NEW QUESTION 27

- (Topic 4)

Note: This question is part of a series of questions that present the same scenario. Each question in the series contains a unique solution that might meet the stated goals. Some question sets might have more than one correct solution, while others might not have a correct solution.

After you answer a question in this section, you will NOT be able to return to it. As a result, these questions will not appear in the review screen.

You manage a project in Azure DevOps.

You need to prevent the configuration of the project from changing over time. Solution: Implement Continuous Integration for the project.

Does this meet the goal?

- A. Yes
- B. No

Answer: B

Explanation:

Instead implement Continuous Assurance for the project.

Reference:

<https://azsk.azurewebsites.net/04-Continous-Assurance/Readme.html>

NEW QUESTION 28

DRAG DROP - (Topic 4)

Your company wants to use Azure Application Insights to understand how user behaviors affect an application.

Which application Insights tool should you use to analyze each behavior? To answer, drag the appropriate tools to the correct behaviors. Each tool may be used once, more than once, or not at all. You may need to drag the split bar between panes or scroll to view content.

NOTE: Each correct selection is worth one point.

Tools	Answer Area
Impact	Feature usage: <input type="text"/>
User Flows	User actions by day: <input type="text"/>
Users	The effect that the performance of the application has on the usage of a page or a feature: <input type="text"/>

Solution:

Box 1: User Flows

The User Flows tool visualizes how users navigate between the pages and features of your site. It's great for answering questions like:

How do users navigate away from a page on your site? What do users click on a page on your site?

Where are the places that users churn most from your site?

Are there places where users repeat the same action over and over? Box 2: Users

Box 3: Impact

Does this meet the goal?

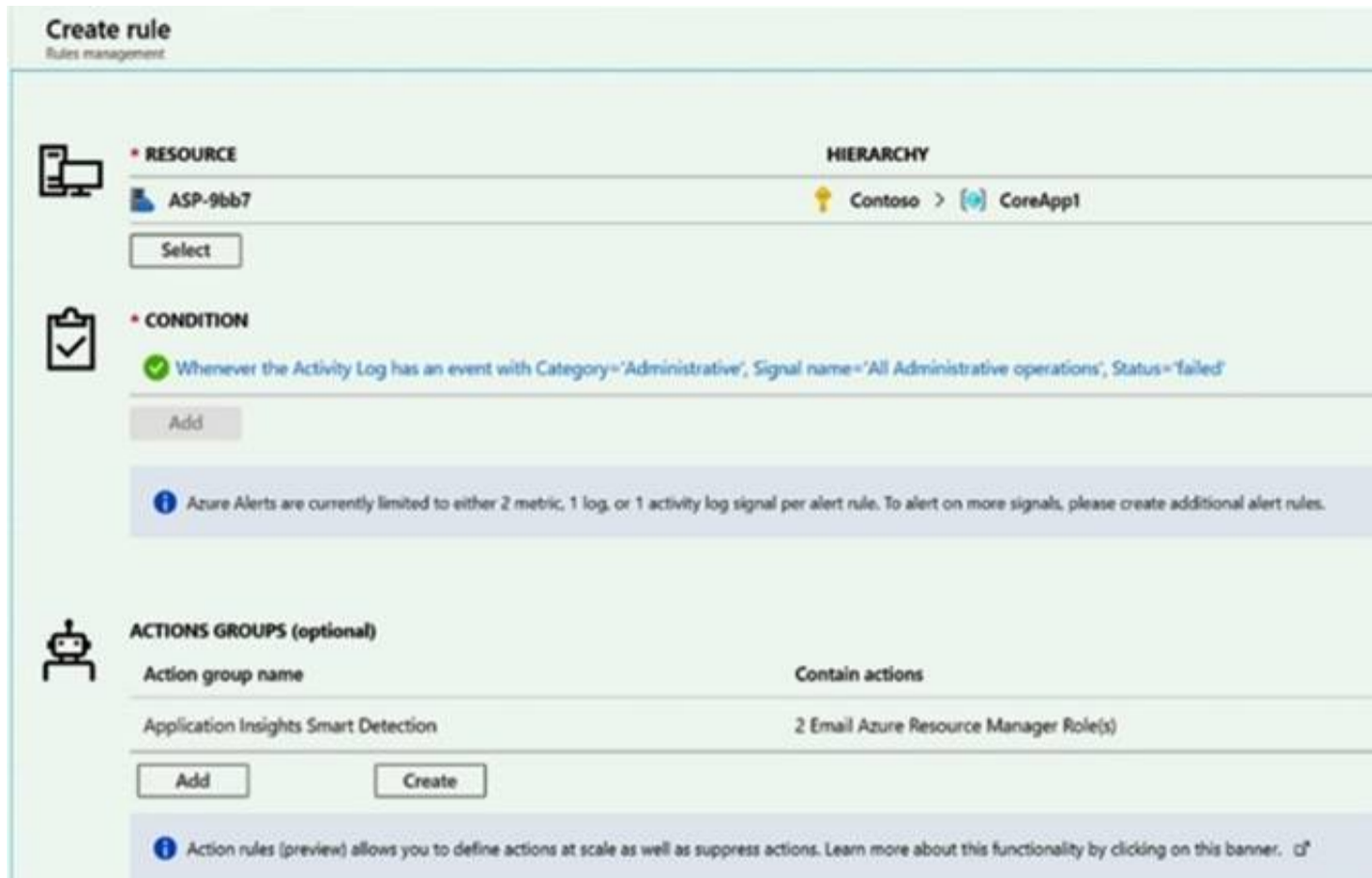
- A. Yes
- B. No

Answer: A

NEW QUESTION 29

- (Topic 4)

You create an alert rule in Azure Monitor as shown in the following exhibit.



Which action will trigger an alert?

- A. a failed attempt to delete the ASP-9bb7 resource
- B. a change to a role assignment for the ASP-9bb7 resource
- C. a successful attempt to delete the ASP-9bb7 resource
- D. a failed attempt to scale up the ASP-9bb7 resource

Answer: A

NEW QUESTION 30

SIMULATION - (Topic 4)

You plan to deploy a website that will be hosted in two Azure regions.

You need to create an Azure Traffic Manager profile named az40011566895n1-tm in a resource group named RG1lod11566895. The solution must ensure that users will always connect to a copy of the website that is in the same country.

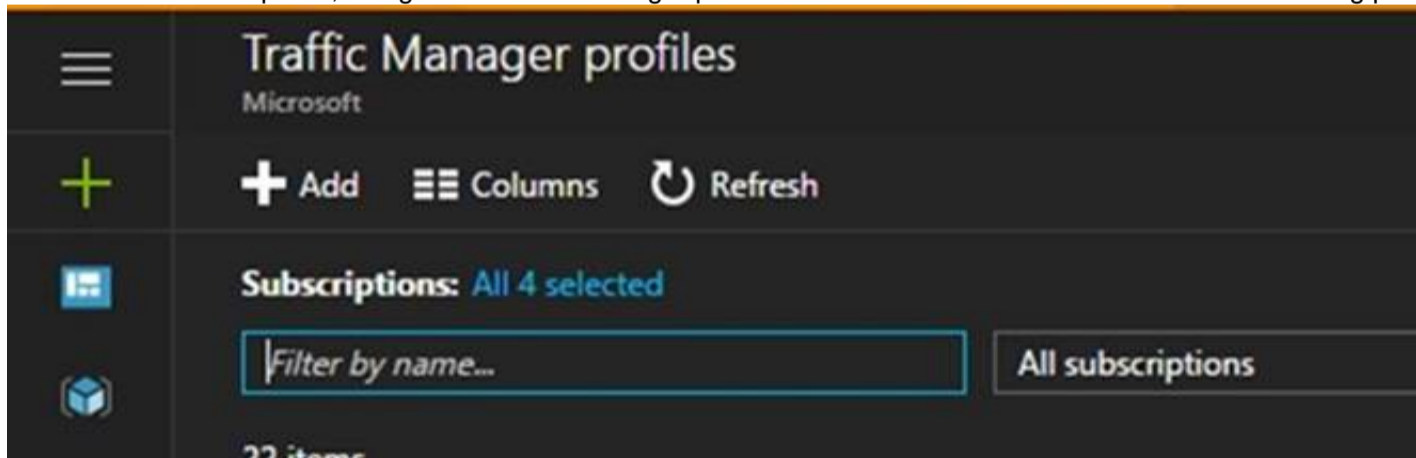
To complete this task, sign in to the Microsoft Azure portal.

A.

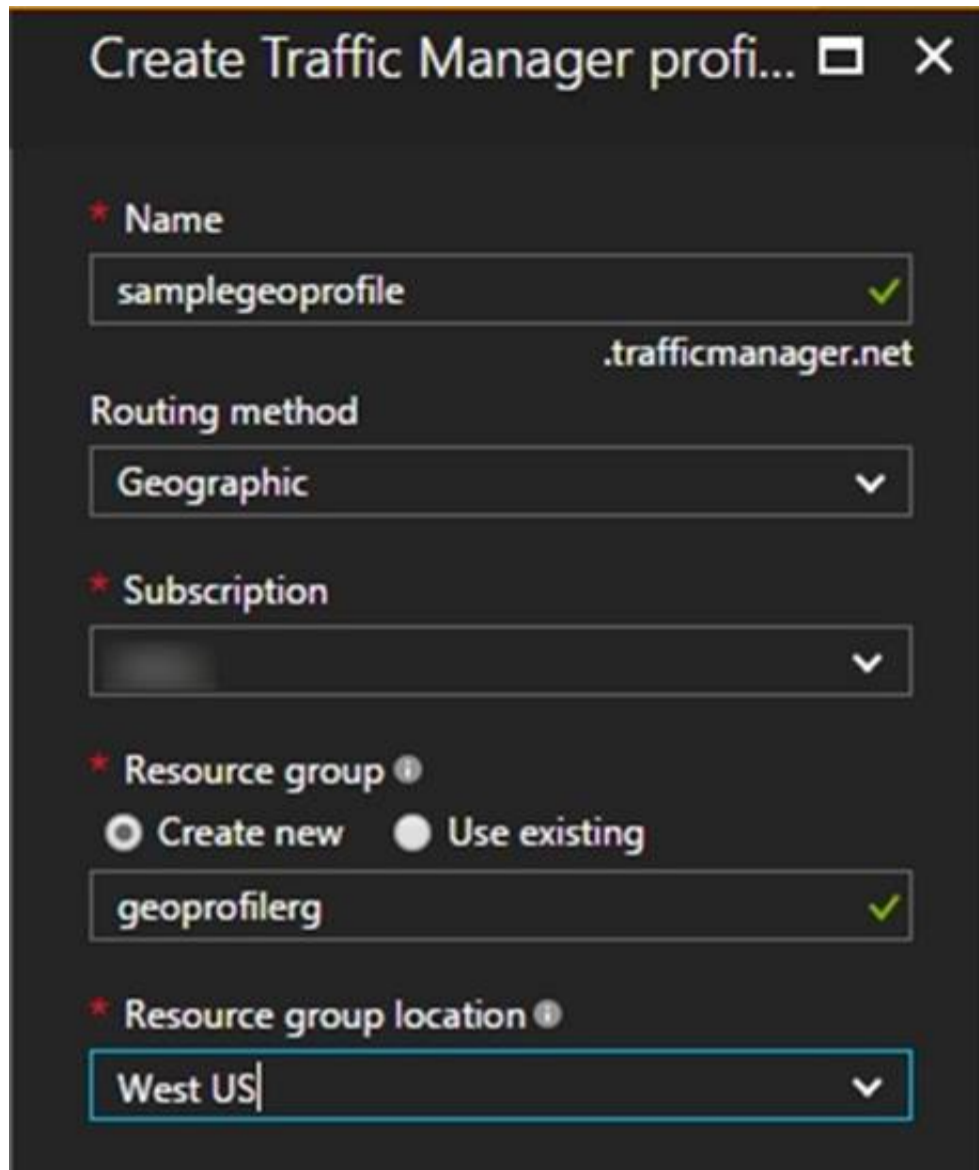
Answer: Seesolutionbelow.

Explanation:

* 1. Go to the Azure portal, navigate to Traffic Manager profiles and click on the Add button to create a routing profile.



* 2. In the Create Traffic Manager profile, enter, or select these settings:
 Name: az40011566895n1-tm
 Routing method: Geographic
 Resource group: RG1lod11566895



Create Traffic Manager profi... [] [X]

* Name
samplegeoprofile ✓
.trafficmanager.net

Routing method
Geographic ▾

* Subscription
▾

* Resource group ⓘ
 Create new Use existing
geoprofilerg ✓

* Resource group location ⓘ
West US ▾

Note: Traffic Manager profiles can be configured to use the Geographic routing method so that users are directed to specific endpoints (Azure, External or Nested) based on which geographic location their DNS query originates from. This empowers Traffic Manager customers to enable scenarios where knowing a user's geographic region and routing them based on that is important.

NEW QUESTION 31

.....

Thank You for Trying Our Product

We offer two products:

1st - We have Practice Tests Software with Actual Exam Questions

2nd - Questions and Answers in PDF Format

AZ-400 Practice Exam Features:

- * AZ-400 Questions and Answers Updated Frequently
- * AZ-400 Practice Questions Verified by Expert Senior Certified Staff
- * AZ-400 Most Realistic Questions that Guarantee you a Pass on Your FirstTry
- * AZ-400 Practice Test Questions in Multiple Choice Formats and Updatesfor 1 Year

100% Actual & Verified — Instant Download, Please Click
[Order The AZ-400 Practice Test Here](#)