

Cisco

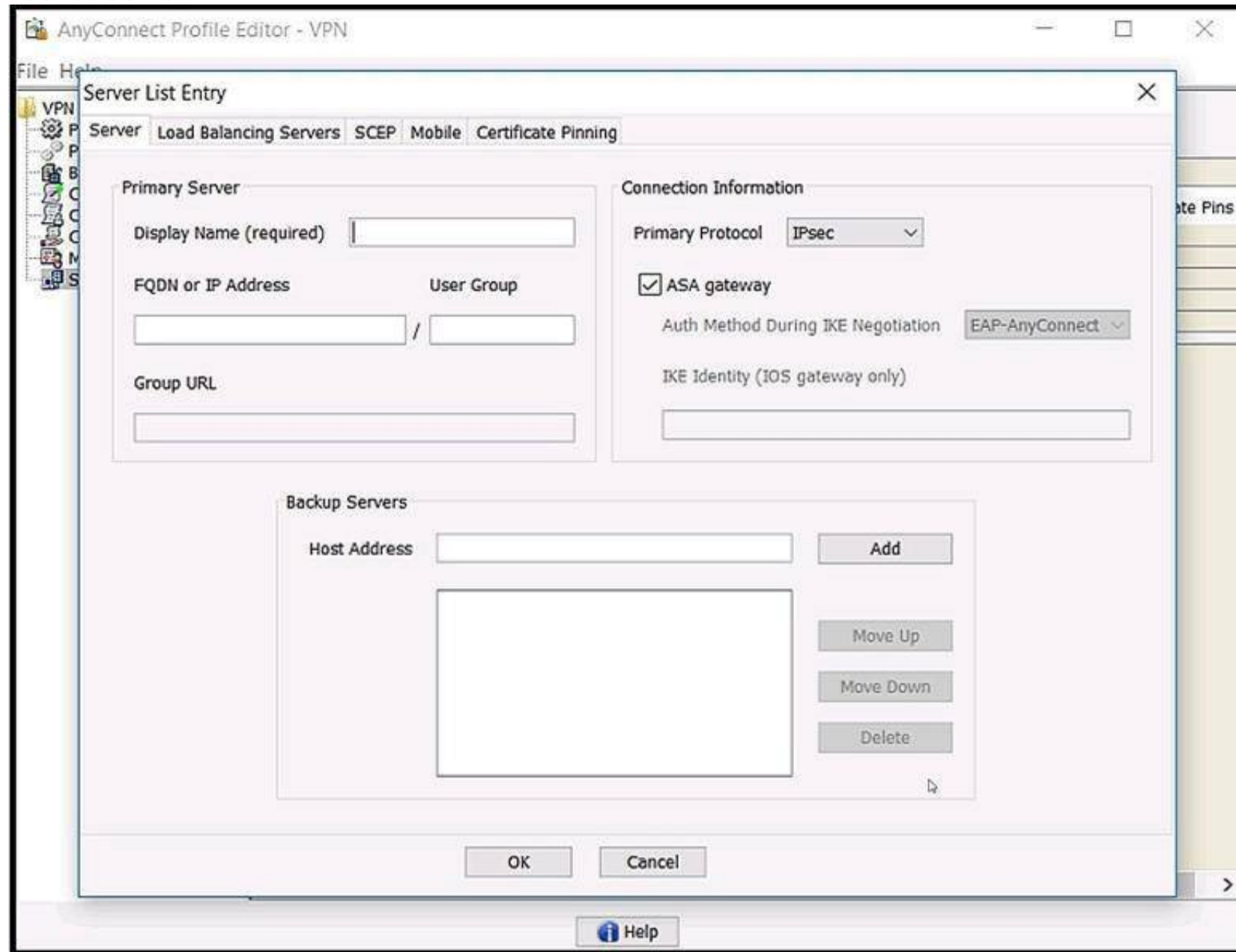
Exam Questions 300-730

Implementing Secure Solutions with Virtual Private Networks (SVPN)



NEW QUESTION 1

Refer to the exhibit.



Which value must be configured in the User Group field when the Cisco AnyConnect Profile is created to connect to an ASA headend with IPsec as the primary protocol?

- A. address-pool
- B. group-alias
- C. group-policy
- D. tunnel-group

Answer: D

Explanation:

Reference: https://www.cisco.com/c/en/us/td/docs/security/vpn_client/anyconnect/anyconnect41/administration/guide/b_AnyConnect_Administrator_Guide_4-1/configure-vpn.html

NEW QUESTION 2

Refer to the exhibit.

```

aaa new-model
!
aaa authorization network local-group-author-list local
!
crypto pki trustpoint trustpoint1
  enrollment url http://192.168.3.1:80
  revocation-check crl
!
crypto pki certificate map certmap1 1
  subject-name co cisco
!
crypto ikev2 authorization policy author-policy1
  ipv6 pool v6-pool
  ipv6 dns 2001:DB8:1::11 2001:DB8:1::12
  ipv6 subnet-acl v6-acl
!
crypto ikev2 profile ikev2-profile1
  match certificate certmap1
  authentication local rsa-sig
  authentication remote rsa-sig
  pki trustpoint trustpoint1
  aaa authorization group cert list local-group-author-list
author-policy1
  virtual-template 1
!
crypto ipsec transform-set transform1 esp-aes esp-sha-hmac
!
crypto ipsec profile ipsec-profile1
  set transform-set trans transform1
  set ikev2-profile ikev2-profile1
!
interface Ethernet0/0
  ipv6 address 2001:DB8:1::1/32
!
interface Virtual-Template1 type tunnel
  ipv6 unnumbered Ethernet0/0
  tunnel mode ipsec ipv6
  tunnel protection ipsec profile ipsec-profile1
!
ipv6 local pool v6-pool 2001:DB8:1::10/32 48
!
ipv6 access-list v6-acl
  permit ipv6 host 2001:DB8:1::20 any
  permit ipv6 host 2001:DB8:1::30 any

```

What is configured as a result of this command set?

- A. FlexVPN client profile for IPv6
- B. FlexVPN server to authorize groups by using an IPv6 external AAA
- C. FlexVPN server for an IPv6 dVTI session
- D. FlexVPN server to authenticate IPv6 peers by using EAP

Answer: A

Explanation:

Reference: https://www.cisco.com/c/en/us/td/docs/ios-xml/ios/sec_conn_ike2vpn/configuration/xs-3s/sec-flex-vpn-xe-3s-book/sec-cfg-flex-clnt.html

NEW QUESTION 3

Which two types of web resources or protocols are enabled by default on the Cisco ASA Clientless SSL VPN portal? (Choose two.)

- A. HTTP
- B. ICA (Citrix)
- C. VNC
- D. RDP
- E. CIFS

Answer: DE

Explanation:

Reference: <https://www.cisco.com/c/en/us/td/docs/security/asa/asa94/config-guides/cli/vpn/asa-94-vpn-config/webvpn-configure-gateway.html>

NEW QUESTION 4

Cisco AnyConnect Secure Mobility Client has been configured to use IKEv2 for one group of users and SSL for another group. When the administrator configures a new AnyConnect release on the Cisco ASA, the IKEv2 users cannot download it automatically when they connect. What might be the problem?

- A. The XML profile is not configured correctly for the affected users.
- B. The new client image does not use the same major release as the current one.
- C. Client services are not enabled.
- D. Client software updates are not supported with IKEv2.

Answer: C

NEW QUESTION 5

Under which section must a bookmark or URL list be configured on a Cisco ASA to be available for clientless SSLVPN users?

- A. tunnel-group (general-attributes)
- B. tunnel-group (webvpn-attributes)
- C. webvpn (group-policy)
- D. webvpn (global configuration)

Answer: D

NEW QUESTION 6

Which two statements about the Cisco ASA Clientless SSL VPN solution are true? (Choose two.)

- A. When a client connects to the Cisco ASA WebVPN portal and tries to access HTTP resources through the URL bar, the client uses the local DNS to perform FQDN resolution.
- B. The rewriter enable command under the global webvpn configuration enables the rewriter functionality because that feature is disabled by default.
- C. A Cisco ASA can simultaneously allow Clientless SSL VPN sessions and AnyConnect client sessions.
- D. When a client connects to the Cisco ASA WebVPN portal and tries to access HTTP resources through the URL bar, the ASA uses its configured DNS servers to perform FQDN resolution.
- E. Clientless SSLVPN provides Layer 3 connectivity into the secured network.

Answer: CD

NEW QUESTION 7

Which command automatically initiates a smart tunnel when a user logs in to the WebVPN portal page?

- A. auto-upgrade
- B. auto-connect
- C. auto-start
- D. auto-run

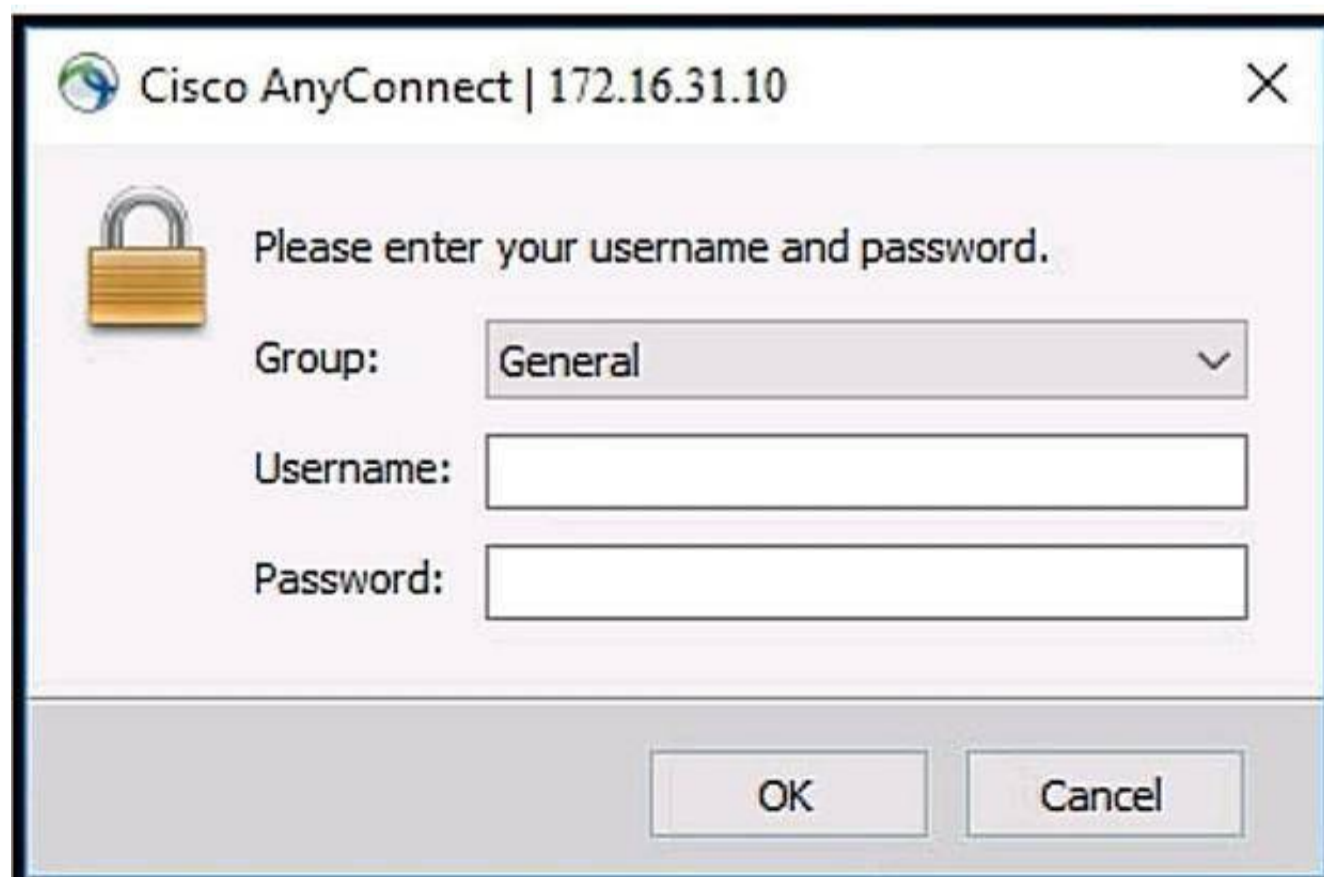
Answer: C

Explanation:

Reference: https://www.cisco.com/c/en/us/td/docs/security/asa/asa91/configuration/vpn/asa_91_vpn_config/webvpn-configure-policy-group.html

NEW QUESTION 8

Refer to the exhibit.



Which two commands under the tunnel-group webvpn-attributes result in a Cisco AnyConnect user receiving the AnyConnect prompt in the exhibit? (Choose two.)

- A. group-url https://172.16.31.10/General enable
- B. group-policy General internal
- C. authentication aaa
- D. authentication certificate
- E. group-alias General enable

Answer: BE

NEW QUESTION 9

In a FlexVPN deployment, the spokes successfully connect to the hub, but spoke-to-spoke tunnels do not form. Which troubleshooting step solves the issue?

- A. Verify the spoke configuration to check if the NHRP redirect is enabled.
- B. Verify that the spoke receives redirect messages and sends resolution requests.
- C. Verify the hub configuration to check if the NHRP shortcut is enabled.
- D. Verify that the tunnel interface is contained within a VRF.

Answer: B

Explanation:

Reference: https://www.cisco.com/c/en/us/td/docs/ios-xml/ios/sec_conn_dmvpn/configuration/15-mt/sec-conn-dmvpn-15-mt-book/sec-conn-dmvpn-summaps.pdf

NEW QUESTION 10

Refer to the exhibit.

```
IKEv2:(SESSION ID = 17,SA ID = 1):Processing IKE_AUTH message
IKEv2:IPsec policy validate request sent for profile CloudOne with psh index 1.

IKEv2:(SESSION ID = 17,SA ID = 1):
IKEv2:(SA ID = 1):[IPsec -> IKEv2] Callback received for the validate proposal - FAILED.

IKEv2-ERROR:(SESSION ID = 17,SA ID = 1):: There was no IPSEC policy found for received TS
IKEv2:(SESSION ID = 17,SA ID = 1):Sending TS unacceptable notify
IKEv2:(SESSION ID = 17,SA ID = 1):Get my authentication method
IKEv2:(SESSION ID = 17,SA ID = 1):My authentication method is 'PSK'
IKEv2:(SESSION ID = 17,SA ID = 1):Get peer's preshared key for 68.72.250.251
IKEv2:(SESSION ID = 17,SA ID = 1):Generate my authentication data
IKEv2:(SESSION ID = 17,SA ID = 1):Use preshared key for id 68.72.250.250, key len 5
IKEv2:[IKEv2 -> Crypto Engine] Generate IKEv2 authentication data
IKEv2:[Crypto Engine -> IKEv2] IKEv2 authentication data generation PASSED
IKEv2:(SESSION ID = 17,SA ID = 1):Get my authentication method
IKEv2:(SESSION ID = 17,SA ID = 1):My authentication method is 'PSK'
IKEv2:(SESSION ID = 17,SA ID = 1):Generating IKE_AUTH message
IKEv2:(SESSION ID = 17,SA ID = 1):Constructing IDr payload: '68.72.250.250' of type 'IPv4 address'
IKEv2:(SESSION ID = 17,SA ID = 1):Building packet for encryption.
Payload contents:
VID IDr AUTH NOTIFY(TS_UNACCEPTABLE)

IKEv2:(SESSION ID = 17,SA ID = 1):Sending Packet [To 68.72.250.251:500/From 68.72.250.250:500/VRF i0:f0]
Initiator SPI : 3D527B1D50DBEEF4 - Responder SPI : 8C693F77F2656636 Message id: 1
IKEv2 IKE_AUTH Exchange RESPONSE
Payload contents:
ENCR
```

Based on the debug output, which type of mismatch is preventing the VPN from coming up?

- A. interesting traffic
- B. lifetime
- C. preshared key
- D. PFS

Answer: B

Explanation:

If the responder's policy does not allow it to accept any part of the proposed Traffic Selectors, it responds with a TS_UNACCEPTABLE Notify message.

NEW QUESTION 11

Refer to the exhibit.

An SSL client is connecting to an ASA headend. The session fails with the message "Connection attempt has timed out. Please verify Internet connectivity." Based on how the packet is processed, which phase is causing the failure?

- A. phase 9: rpf-check
- B. phase 5: NAT
- C. phase 4: ACCESS-LIST
- D. phase 3: UN-NAT

Answer: D

NEW QUESTION 12

What is a requirement for smart tunnels to function properly?

- A. Java or ActiveX must be enabled on the client machine.
- B. Applications must be UDP.
- C. Stateful failover must not be configured.
- D. The user on the client machine must have admin access.

Answer: A

Explanation:

Reference: <https://www.cisco.com/c/en/us/support/docs/security/asa-5500-x-series-next-generation-firewalls/111007-smart-tunnel-asa-00.html>

NEW QUESTION 13

.....

Thank You for Trying Our Product

We offer two products:

1st - We have Practice Tests Software with Actual Exam Questions

2nd - Questions and Answers in PDF Format

300-730 Practice Exam Features:

- * 300-730 Questions and Answers Updated Frequently
- * 300-730 Practice Questions Verified by Expert Senior Certified Staff
- * 300-730 Most Realistic Questions that Guarantee you a Pass on Your First Try
- * 300-730 Practice Test Questions in Multiple Choice Formats and Updates for 1 Year

100% Actual & Verified — Instant Download, Please Click
[Order The 300-730 Practice Test Here](#)