

Cisco

Exam Questions 300-430

Implementing Cisco Enterprise Wireless Networks (ENWLSI)



NEW QUESTION 1

An engineer configures the wireless LAN controller to perform 802.1x user authentication. Which configuration must be enabled to ensure that client devices can connect to the wireless, even when WLC cannot communicate with the RADIUS?

- A. pre-authentication
- B. local EAP
- C. authentication caching
- D. Cisco Centralized Key Management

Answer: B

NEW QUESTION 2

A user is trying to connect to a wireless network that is configured for WPA2-Enterprise security using a corporate laptop. The CA certificate for the authentication server has been installed on the Trusted Root Certification Authorities store on the laptop. The user has been prompted to enter the credentials multiple times, but the authentication has not succeeded. What is causing the issue?

- A. There is an IEEE invalid 802.1X authentication policy on the authentication server.
- B. The user Active Directory account is locked out after several failed attempts.
- C. There is an invalid 802.1X authentication policy on the authenticator.
- D. The laptop has not received a valid IP address from the wireless controller.

Answer: C

NEW QUESTION 3

An engineer completed the basic installation for two Cisco CMX servers and is in the process of configuring high availability, but it fails. Which two statements about the root of the issue are true? (Choose two.)

- A. The Cisco CMX instances are installed in the same subnet.
- B. The types of the primary and secondary Cisco CMX installations differ.
- C. The delay between the primary and secondary instance is 200 ms.
- D. The sizes of the primary and secondary Cisco CMX installations differ.
- E. Both Cisco CMX installations are virtual.

Answer: BD

NEW QUESTION 4

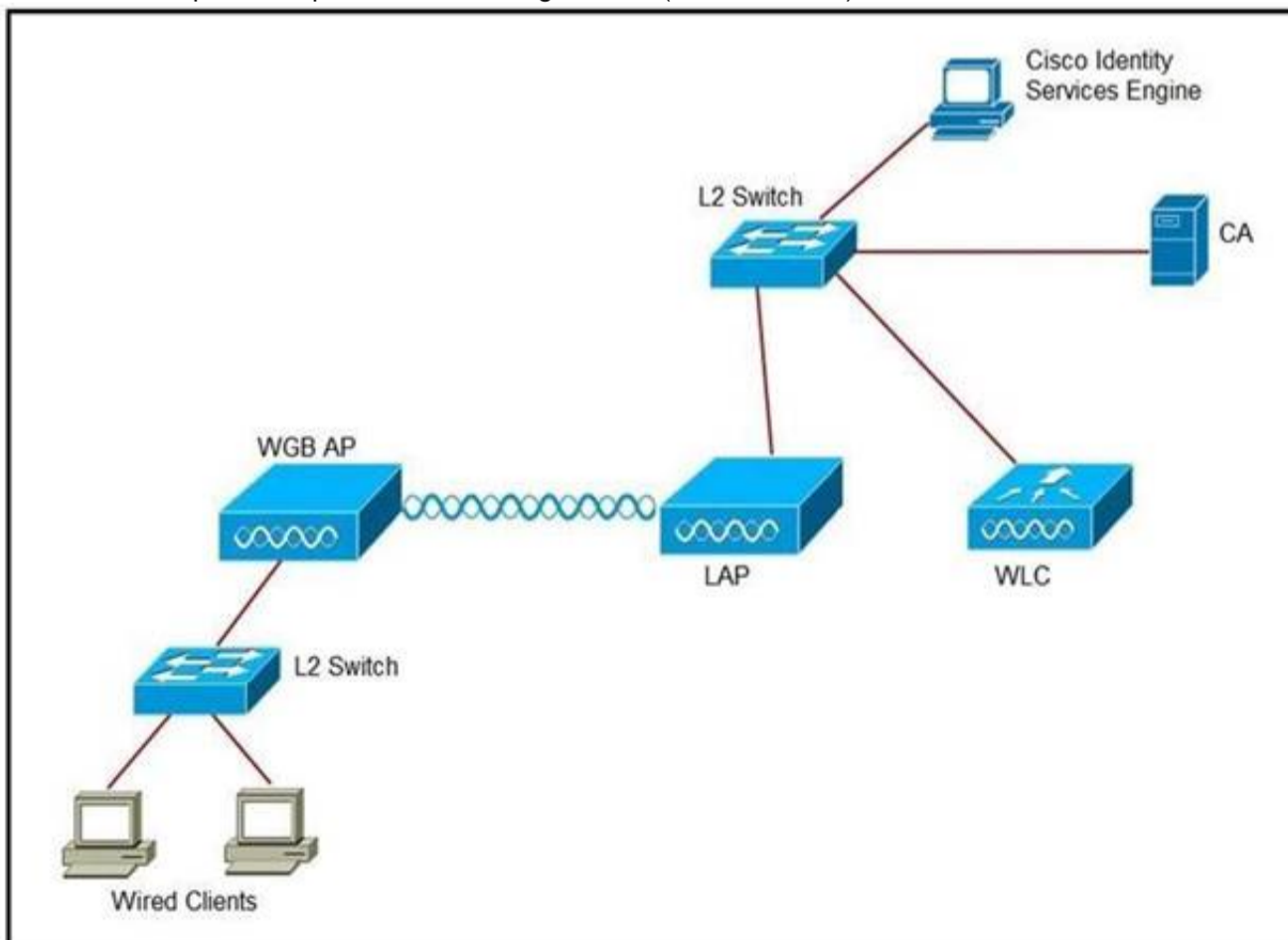
An engineer wants the wireless voice traffic class of service to be used to determine the queue order for packets received, and then have the differentiated services code point set to match when it is resent to another port on the switch. Which configuration is required in the network?

- A. Platinum QoS configured on the WLAN
- B. WMM set to required on the WLAN
- C. msl qos trust dscp configured on the controller switch port
- D. msl qos trust cos configured on the controller switch port

Answer: C

NEW QUESTION 5

Refer to the exhibit. An engineer must connect a fork lift via a WGB to a wireless network and must authenticate the WGB certificate against the RADIUS server. Which three steps are required for this configuration? (Choose three.)



- A. Configure the certificate, WLAN, and radio interface on WGB.
- B. Configure the certificate on the WLC.
- C. Configure WLAN to authenticate using ISE.
- D. Configure the access point with the root certificate from ISE.
- E. Configure WGB as a network device in ISE.
- F. Configure a policy on ISE to allow devices to connect that validate the certificate.

Answer: ACF

NEW QUESTION 6

What is the default IEEE 802.1x AP authentication configuration on a Cisco Catalyst 9800 Series Wireless Controller?

- A. EAP-PEAP with 802.1x port authentication
- B. EAP-TLS with 802.1x port authentication
- C. EAP-FAST with CAPWAP DTLS + port authentication
- D. EAP-FAST with CAPWAP DTLS

Answer: C

NEW QUESTION 7

What is the maximum time range that can be viewed on the Cisco DNA Center issues and alarms page?

- A. 3 hours
- B. 24 hours
- C. 3 days
- D. 7 days

Answer: B

NEW QUESTION 8

Refer to the exhibit.

No.	Time	Source	Destination	Protocol	Length	Info
1	0.000000	10.48.39.251	10.48.71.21	UDP	162	9999 → 2003 Len=120
2	0.003747	10.48.39.251	10.48.71.21	UDP	146	9999 → 2003 Len=104
3	1.087479	10.48.39.214	10.48.71.21	UDP	130	9999 → 2003 Len=88
4	2.733577	10.48.39.214	10.48.71.21	UDP	130	9999 → 2003 Len=88
5	2.999859	10.48.39.251	10.48.71.21	UDP	178	9999 → 2003 Len=136
6	3.001227	10.48.39.251	10.48.71.21	UDP	162	9999 → 2003 Len=120
7	4.355249	10.48.39.214	10.48.71.21	UDP	146	9999 → 2003 Len=104
8	5.999538	10.48.39.251	10.48.71.21	UDP	178	9999 → 2003 Len=136
9	6.000959	10.48.39.251	10.48.71.21	UDP	146	9999 → 2003 Len=104
10	8.999418	10.48.39.251	10.48.71.21	UDP	146	9999 → 2003 Len=104
11	9.000791	10.48.39.251	10.48.71.21	UDP	178	9999 → 2003 Len=136
12	9.262904	10.48.39.214	10.48.71.21	UDP	146	9999 → 2003 Len=104
13	10.894785	10.48.39.214	10.48.71.21	UDP	130	9999 → 2003 Len=88
14	11.995126	10.48.39.251	10.48.71.21	UDP	194	9999 → 2003 Len=152
15	11.999193	10.48.39.251	10.48.71.21	UDP	162	9999 → 2003 Len=120
16	14.994902	10.48.39.251	10.48.71.21	UDP	178	9999 → 2003 Len=136
17	14.996368	10.48.39.251	10.48.71.21	UDP	162	9999 → 2003 Len=120
18	17.994857	10.48.39.251	10.48.71.21	UDP	146	9999 → 2003 Len=104
19	17.996231	10.48.39.251	10.48.71.21	UDP	162	9999 → 2003 Len=120
20	18.102843	10.48.39.251	10.48.71.21	UDP	130	9999 → 2003 Len=88
21	21.098408	10.48.39.251	10.48.71.21	UDP	146	9999 → 2003 Len=104
22	21.099952	10.48.39.251	10.48.71.21	UDP	162	9999 → 2003 Len=120
23	24.098574	10.48.39.251	10.48.71.21	UDP	146	9999 → 2003 Len=104
24	24.099804	10.48.39.251	10.48.71.21	UDP	162	9999 → 2003 Len=120
25	27.098099	10.48.39.251	10.48.71.21	UDP	162	9999 → 2003 Len=120
26	27.099839	10.48.39.251	10.48.71.21	UDP	130	9999 → 2003 Len=88
27	28.880307	10.48.39.164	10.48.71.21	UDP	146	9999 → 2003 Len=104
28	28.881569	10.48.39.214	10.48.71.21	CAPP	146	CAPP MD5 Encrypted
29	30.094237	10.48.39.251	10.48.71.21	UDP	178	9999 → 2003 Len=136
30	30.097812	10.48.39.251	10.48.71.21	UDP	146	9999 → 2003 Len=104
31	30.513451	10.48.39.214	10.48.71.21	UDP	130	9999 → 2003 Len=88
32	30.515926	10.48.39.164	10.48.71.21	UDP	130	9999 → 2003 Len=88

```
> Frame 1: 162 bytes on wire (1296 bits), 162 bytes captured (1296 bits)
> Ethernet II, Src: CiscInc_2a:c4:a3 (00:06:f6:2a:c4:a3), Dst: Vmware_99:4e:19 (00:50:56:99:4e:19)
> Internet Protocol Version 4, Src: 10.48.39.251, Dst: 10.48.71.21
> User Datagram Protocol, Src Port: 9999 (9999), Dst Port: 2003 (2003)
v Data (120 bytes)
  Data: ae 2f 44 f0 00 00 b4 5f ef 06 fd cb b7 6c 03 c7 ...
  [Length: 120]
```

The image shows a packet capture that was taken at the CLI of the Cisco CMX server. It shows UDP traffic from the WLC coming into the server. What does the capture prove?

- A. The Cisco CMX server receives NetFlow data from the WLC.
- B. The Cisco CMX server receives NMSP traffic from the WLC.
- C. The Cisco CMX server receives SNMP traffic from the WLC.
- D. The Cisco CMX server receives Angle-of-Arrival data from the WLC.

Answer: D

NEW QUESTION 9

During the EAP process and specifically related to the client authentication session, which encrypted key is sent from the RADIUS server to the access point?

- A. WPA key
- B. session key
- C. encryption key
- D. shared-secret key

Answer: B

NEW QUESTION 10

Which two protocols are used to communicate between the Cisco MSE and the Cisco Prime Infrastructure network management software? (Choose two.)

- A. HTTPS
- B. Telnet
- C. SOAP
- D. SSH
- E. NMSP

Answer: AE

NEW QUESTION 11

Refer to the exhibit. A network administrator deploys the DHCP profiler service in two ISE servers: 10.3.10.101 and 10.3.10.102. All BYOD devices connecting to WLAN on VLAN63 have been incorrectly profiled and are assigned as unknown profiled endpoints. Which action efficiently rectifies the issue according to Cisco recommendations?

```
(Cisco WLC) >show dhcp proxy

DHCP ProxyBehaviour: enabled

!
interface Vlan63
 ip address 10.10.63.252/22
 description Dot1x_BYOD
 no shutdown
!
```

- A. Nothing needed to be added on the Cisco WLC or VLAN interface
- B. The ISE configuration must be fixed.
- C. Disable DHCP proxy on the Cisco WLC.
- D. Disable DHCP proxy on the Cisco WLC and run the ip helper-address command under the VLAN interface to point to DHCP and the two ISE servers.
- E. Keep DHCP proxy enabled on the Cisco WLC and define helper-address under the VLAN interface to point to the two ISE servers.

Answer: C

NEW QUESTION 12

Which statement about the VideoStream/Multicast Direct feature is true?

- A. IP multicast traffic is reliable over WLAN by default as defined by the IEEE 802.11 wireless multicast delivery mechanism.
- B. Each VideoStream client acknowledges receiving a video IP multicast stream.
- C. It converts the unicast frame to a multicast frame over the air.
- D. It makes the delivery of the IP multicast stream less reliable over the air, but reliable over Ethernet.

Answer: B

Explanation:

Reference: https://www.cisco.com/c/en/us/td/docs/wireless/controller/8-1/configuration-guide/b_cg81/multicast_broadcast_setup.html

NEW QUESTION 13

.....

Thank You for Trying Our Product

We offer two products:

1st - We have Practice Tests Software with Actual Exam Questions

2nd - Questions and Answers in PDF Format

300-430 Practice Exam Features:

- * 300-430 Questions and Answers Updated Frequently
- * 300-430 Practice Questions Verified by Expert Senior Certified Staff
- * 300-430 Most Realistic Questions that Guarantee you a Pass on Your First Try
- * 300-430 Practice Test Questions in Multiple Choice Formats and Updates for 1 Year

100% Actual & Verified — Instant Download, Please Click
[Order The 300-430 Practice Test Here](#)