

Cisco

Exam Questions 300-415

Implementing Cisco SD-WAN Solutions (ENSDWI)



NEW QUESTION 1

When software is upgraded on a vManage NMS, which two image-adding options store images in a local vManage software repository? (Choose two.)

- A. To be downloaded over a SMTP connection
- B. To be downloaded over a SNMP connection
- C. To be downloaded over an out-of-band connection
- D. To be downloaded over a control plane connection
- E. To be downloaded over an ICMP connection

Answer: CD

NEW QUESTION 2

Which API call retrieves a list of all devices in the network?

- A. `https://vmanage_IP_address/dataservice/system/device/{{model}}`
- B. `http://vmanage_IP_address/dataservice/system/device/{{model}}`
- C. `http://vmanage_IP_address/api-call/system/device/{{model}}`
- D. `https://vmanage_IP_address/api-call/system/device/{{model}}`

Answer: A

Explanation:

Display all available vEdge routers in the overlay network.

```
GET https://{vmanage-ip-address}/dataservice/system/device/vedges
```

NEW QUESTION 3

An engineer is adding a tenant with location ID 399533345 in vManage. What is the maximum number of alphanumeric characters that is accepted in the tenant name filed?

- A. 64
- B. 128
- C. 256
- D. 8

Answer: B

Explanation:

In the Add Tenant window:

- a. Enter a name for the tenant. It can be up to 128 characters and can contain only alphanumeric characters.

NEW QUESTION 4

A network administrator configures SNMFV3 on a Cisco WAN Edge router from CL I for monitoring purposes How many characters are supported by the snmp user username command?

- A. from 1 to 8
- B. from 1 to 16
- C. from 1 to 32
- D. from 1 to 48

Answer: C

NEW QUESTION 5

Which two requirements must be met for DNS inspection when integrating with cisco umbrella? (Choose two)

- A. Upload the WAN Edge serial allow list to the Umbrella portal.
- B. Attach security policy to the device template.
- C. Configure the Umbrella token on the vManage
- D. Create and attach a System feature template with the Umbrella registration credentials.
- E. Register and configure the vManage public IP and serial number in the Umbrella portal.

Answer: BC

Explanation:

<https://www.connection.com/~/-/media/pdfs/brands/c/cisco/security/cnxcn-cisco-sd-wan-and-umbrella.pdf?la=en>

NEW QUESTION 6

Which component is used for stateful inspection of TCP, UDP, and ICMP flows in Cisco SD-WAN firewall policies?

- A. zones
- B. sites
- C. subnets
- D. interfaces

Answer: A

NEW QUESTION 7

An engineer is configuring a shaping rate of 1 Mbps on the WAN link of a WAN Edge router Which configuration accomplishes this task'?

- vpn vpn-id
interface interface-name
shaping-rate 1000000
- vpn vpn-id
interface interface-name
shaping-rate 1000
- interface interface-name
vpn vpn-id
shaping-rate 1000000
- interface interface-name
vpn vpn-id
shaping-rate 1000

- A. Option A
- B. Option B
- C. Option C
- D. Option D

Answer: B

NEW QUESTION 8

Which routing protocol has the highest default administrative distance?

- A. OMP
- B. external EIGRP
- C. IS-IS
- D. IBGP

Answer: A

NEW QUESTION 9

Drag and drop the attributes from the left that make each transport location unique onto the right. Not all options are used.

IP address	target1
color	target2
encapsulation	target3
VPN	
service	

Solution:

A TLOC, or Transport Location, is the attachment point where a WAN Edge router connects to the WAN transport network. A TLOC is uniquely identified and represented by a three-tuple, consisting of system IP address, link color, and encapsulation (Generic Routing Encapsulation [GRE] or IPsec).

Does this meet the goal?

- A. Yes
- B. No

Answer: A

NEW QUESTION 10

What prohibits deleting a VNF image from the software repository?

- A. if the image is stored by vManage
- B. if the image is referenced by a service chain
- C. if the image is uploaded by a WAN Edge device
- D. if the image is included in a configured policy

Answer: D

NEW QUESTION 11

Which protocol is used between redundant vSmart controllers to establish a permanent communication channel?

- A. IPsec
- B. HTTPs
- C. DTLS
- D. SSL

Answer: C

NEW QUESTION 12

Which two resource data types are used to collect information for monitoring using REST API in Cisco SD-WAN? (Choose two.)

- A. POST
- B. DELETE
- C. scalar
- D. array
- E. PUT

Answer: CD

NEW QUESTION 13

How many vCPUs and how much RAM are recommended to run the vSmart controller on the KVM server for 251 to 1000 devices in software version 20.4.x?

- A. 4vCPU
- B. 16 GB
- C. 4 vCPU
- D. 8 GB
- E. 8vCPU
- F. 16 GB
- G. 2vCPUs,4GB

Answer: B

NEW QUESTION 14

An engineer is adding a tenant with location JD 306432373 in vManage. What is the maximum number of alphanumeric characters that are accepted in the tenant name field?

- A. 64
- B. 128
- C. 256
- D. 8

Answer: B

Explanation:

In the Add Tenant window:

1. Enter a name for the tenant. It can be up to 128 characters and can contain only alphanumeric characters.

NEW QUESTION 15

An engineer must apply the configuration for certificate installation to vBond Orchestrator and vSmart Controller. Which configuration accomplishes this task?

- A.

```
vpn 0
interface eth1
ip address 199.1.1.1/28
tunnel-interface
allow-service sshd
allow-service netconf
no shutdown
```
- B.

```
vpn 512
interface eth1
ip address 199.1.1.1/28
tunnel-interface
allow-service sshd
allow-service netconf
```
- C.

```
vpn 0
interface eth1
ip address 199.1.1.1/28
tunnel-interface
allow-service sshd
allow-service ntp
```
- D.

```
vpn 512
interface eth1
ip address 199.1.1.1/28
tunnel-interface
allow-service netconf
no allow-service ntp
no allow-service stun
```

- A. Option A
- B. Option B
- C. Option C
- D. Option D

Answer: A

NEW QUESTION 16

Refer to the exhibit.

```
vEdge1# show control connections
```

PEER TYPE	PEER PROT	PEER SYSTEM IP	SITE ID	DOMAIN ID	PEER PRIVATE IP	PEER PRIV PORT	PEER PUBLIC IP
vsmart	dtls	10.2.2.2	1	1	10.50.0.5	12446	10.50.0.5
vsmart	dtls	10.2.2.2	1	1	10.50.0.5	12446	10.50.0.5
vbond	dtls	0.0.0.0	0	0	10.50.0.9	12346	10.50.0.9
vbond	dtls	0.0.0.0	0	0	10.50.0.9	12346	10.50.0.9
vmanage	dtls	10.1.1.1	1	0	10.50.0.1	12446	10.50.0.1

An organization is testing a Cisco SD-WAN solution and decided to have the control plane established first and not the data plane at the time of migration. Which configuration achieves this goal?

A)

CONFIGURATION | CERTIFICATES

WAN Edge List Controllers

Send to Controllers Click Send to Controllers to sync the WAN Edge List on all controllers.

Search Options Total Rows: 20

State	Device Model	Chassis Number	Hostname	IP Address	Serial No./Token	Validate
🟡	vEdge Cloud	9a0cfea0-a463-7dec-c5...	vEdge1	10.10.10.1	BC42AE30	Invalid Staging Valid
🟡	vEdge Cloud	cc5daa8e-9bb1-7c9d-f5...	vEdge2	10.10.10.2	E1F0754E	Invalid Staging Valid
🟡	vEdge Cloud	d7b14bb6-f718-b111-8...	vEdge3	10.10.10.3	F5DA0A8D	Invalid Staging Valid
🟡	vEdge Cloud	92b4f92b-daff-7ce2-c3...	vEdge4	10.10.10.4	BD992059	Invalid Staging Valid
🟡	vEdge Cloud	0183a420-e93e-41f7-6f...	vEdge5	10.10.10.5	FA460EE6	Invalid Staging Valid

B)

CONFIGURATION | DEVICES

WAN Edge List Controllers

Change Mode Upload WAN Edge List Export Bootstrap Configuration Sync Smart Account

CLI mode Search Options Total Rows: 20

vManage mode

State	Device Model	Chassis Number	Serial No./Token	Hostname	System IP	Site ID	Mode
🟢	vEdge Cloud	9a0cfea0-a463-7dec-c586-85f9d29cd56e	BC42AE30	vEdge1	10.10.10.1	1	vManage
🟢	vEdge Cloud	cc5daa8e-9bb1-7c9d-f545-1a9657a000...	E1F0754E	vEdge2	10.10.10.2	2	vManage
🟢	vEdge Cloud	d7b14bb6-f718-b111-8dd7-531fa9c968a2	F5DA0A8D	vEdge3	10.10.10.3	3	vManage
🟢	vEdge Cloud	92b4f92b-daff-7ce2-c3da-622673be0329	BD992059	vEdge4	10.10.10.4	4	vManage
🟢	vEdge Cloud	0183a420-e93e-41f7-6fcb-E74bb8754881	FA460EE6	vEdge5	10.10.10.5	4	vManage

C)

CONFIGURATION | CERTIFICATES

WAN Edge List Controllers

[Send to Controllers](#) Click **Send to Controllers** to sync the WAN Edge list on all controllers

Search Options

State	Device Model	Chassis Number	Hostname	IP Address	Serial No./Token	Validate
	vEdge Cloud	9a0cfea0-a463-7dec-c5...	vEdge1	10.10.10.1	BC42AE30	Invalid Staging Valid
	vEdge Cloud	cc5daa8e-9bb1-7c9d-f5...	vEdge2	10.10.10.2	E1F0754E	Invalid Staging Valid
	vEdge Cloud	d7b14bb6-f718-b111-8...	vEdge3	10.10.10.3	F5DA0A8D	Invalid Staging Valid
	vEdge Cloud	92b4f92b-daff-7ce2-c3...	vEdge4	10.10.10.4	BD992059	Invalid Staging Valid
	vEdge Cloud	0183a420-e93e-41f7-6f...	vEdge5	10.10.10.5	FA460EE6	Invalid Staging Valid

D)

CONFIGURATION | CERTIFICATES

WAN Edge List Controllers

[Send to Controllers](#) Click **Send to Controllers** to sync the WAN Edge list on all controllers

Search Options

Total Rows: 20

State	Device Model	Chassis Number	Hostname	IP Address	Serial No./Token	Validate
	vEdge Cloud	9a0cfea0-a463-7dec-c5...	vEdge1	10.10.10.1	BC42AE30	Invalid Staging Valid
	vEdge Cloud	cc5daa8e-9bb1-7c9d-f5...	vEdge2	10.10.10.2	E1F0754E	Invalid Staging Valid
	vEdge Cloud	d7b14bb6-f718-b111-8...	vEdge3	10.10.10.3	F5DA0A8D	Invalid Staging Valid
	vEdge Cloud	92b4f92b-daff-7ce2-c3...	vEdge4	10.10.10.4	BD992059	Invalid Staging Valid
	vEdge Cloud	0183a420-e93e-41f7-6f...	vEdge5	10.10.10.5	FA460EE6	Invalid Staging Valid

- A. Option A
- B. Option B
- C. Option C
- D. Option D

Answer: A

NEW QUESTION 17

In which file format is a critical severity report downloaded from the MONITOR | ALARM tab in the vManage GUI?

- A. .txt
- B. .pdf
- C. .csv
- D. .xlsx

Answer: C

NEW QUESTION 18

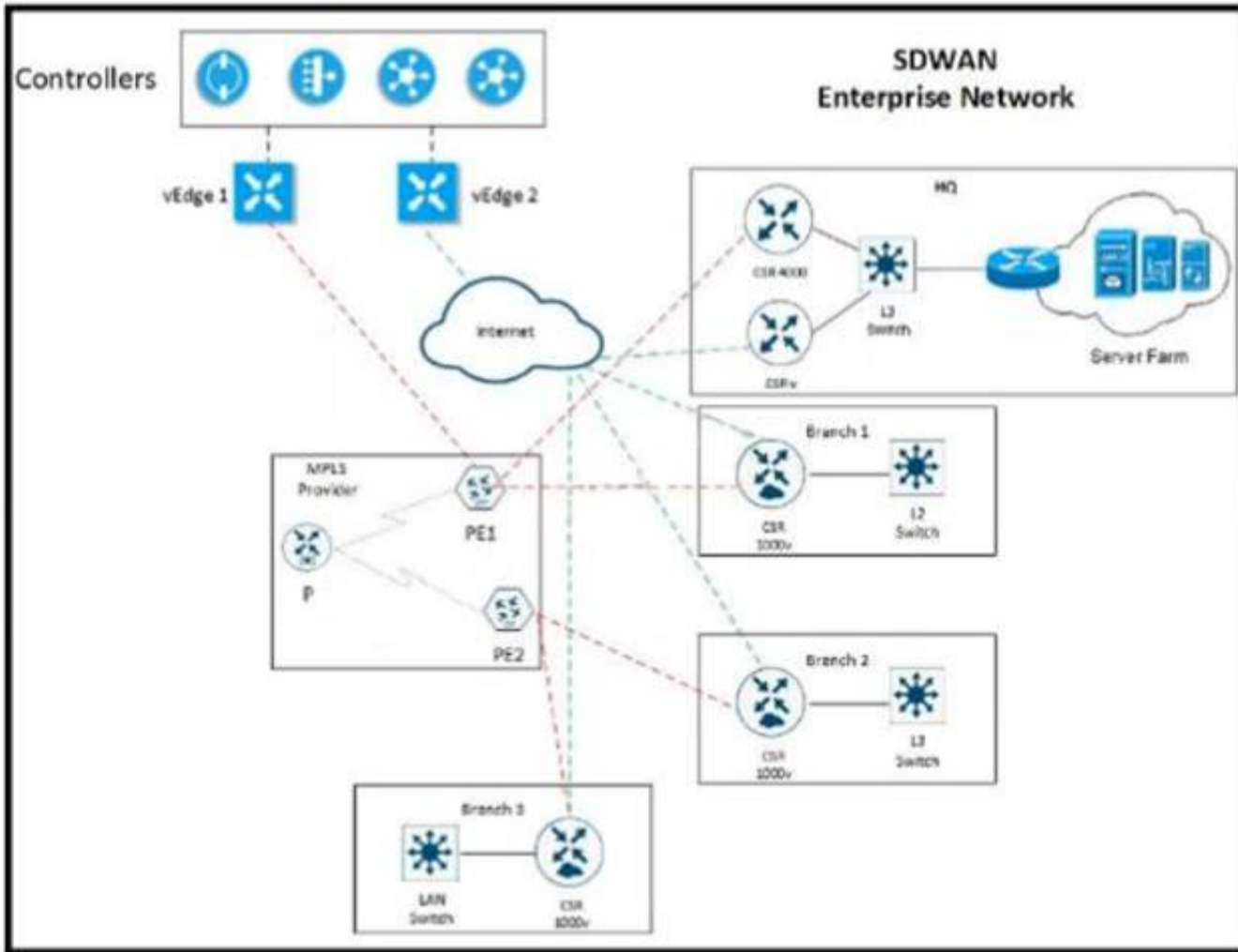
An engineer configured a data policy called ROME-POLICY. Which configuration allows traffic flow from the Rome internal network toward other sites?

- A. apply-policy site-list Rome data-policy ROME-POLICY from-tunnel
- B. apply-policy site-list Rome data-policy ROME-POLICY from-service
- C. site-list Rome control-policy ROME-POLICY in
- D. site-list Rome control-policy ROME-POLICY out

Answer: A

NEW QUESTION 19

Refer to the exhibit



The network team must configure E1 GRP peering at HQ with devices in the service VPN connected to WAN Edge CSRv. CSRv is currently configured with

```

viptela-system:system
device-model vedge-cloud
host-nam CSRv
location CA
system-ip 10.4.4.4
domain-id 1
site-id 1
organization-name ABC
clock timezone US/Newyork
vbond 10.10.0.1 port 12346
    
```

```

omp
no shutdown
graceful-restart
    
```

Which configuration on the WAN Edge meets the requirement?

A)

```

vpn 0
interface ge0/0
description "Internet Circuit"
ip address 209.165.200.229/30
tunnel-interface
encapsulation ipsec
color public-internet
allow-service all

router
eigrp
address-family ipv4-unicast
maximum-path paths 4
network 10.0.0.0/28
redistribute omp

vpn 512
interface eth0
shutdown
    
```

B)

```
vpn 0
interface ge0/0
description "**** Internet Circuit ****"
ip address 209.165.200.229/30
tunnel-interface
encapsulation ipsec
color public-internet
allow-service all

router
eigrp
address-family ipv4-unicast
maximum-path paths 4
network 10.0.0.0/28
redistribute omp
```

```
vpn 512
interface eth0
shutdown
```

C)

```
vpn 0
interface ge0/0
description "**** Internet Circuit ****"
ip address 209.165.200.229/30
tunnel-interface
encapsulation ipsec
color public-internet
allow-service all
```

```
vpn 1
router
eigrp
address-family ipv4-unicast
maximum-path paths 4
network 10.0.0.0/28
redistribute omp
```

```
interface ge0/1
ip address 10.0.0.1/28
```

```
vpn 512
interface eth0
shutdown
```

D)

```
vpn 0
vpn 1
interface ge0/0
description "**** Internet Circuit ****"
ip address 209.165.200.229/30
tunnel-interface
encapsulation ipsec
color public-internet
allow-service all
```

```
router
eigrp
address-family ipv4-unicast
maximum-path paths 4
network 10.0.0.0/28
redistribute omp
```

```
interface ge0/1
ip address 10.0.0.1/28
```

```
vpn 512
interface eth0
shutdown
```

- A. Option A
- B. Option B
- C. Option C
- D. Option D

Answer: C

NEW QUESTION 20

Drag and drop the security terminologies from the left onto the PCI-compliant network features and devices on the right.



Solution:

Graphical user interface, application Description automatically generated

Does this meet the goal?

- A. Yes
- B. No

Answer: A

NEW QUESTION 21

When a WAN Edge device joins the SD-WAN overlay, which Cisco SD-WAN components orchestrates the connection between the WAN Edge device and a vSmart controller?

- A. vManage
- B. vBond
- C. OMP
- D. APIC-EM

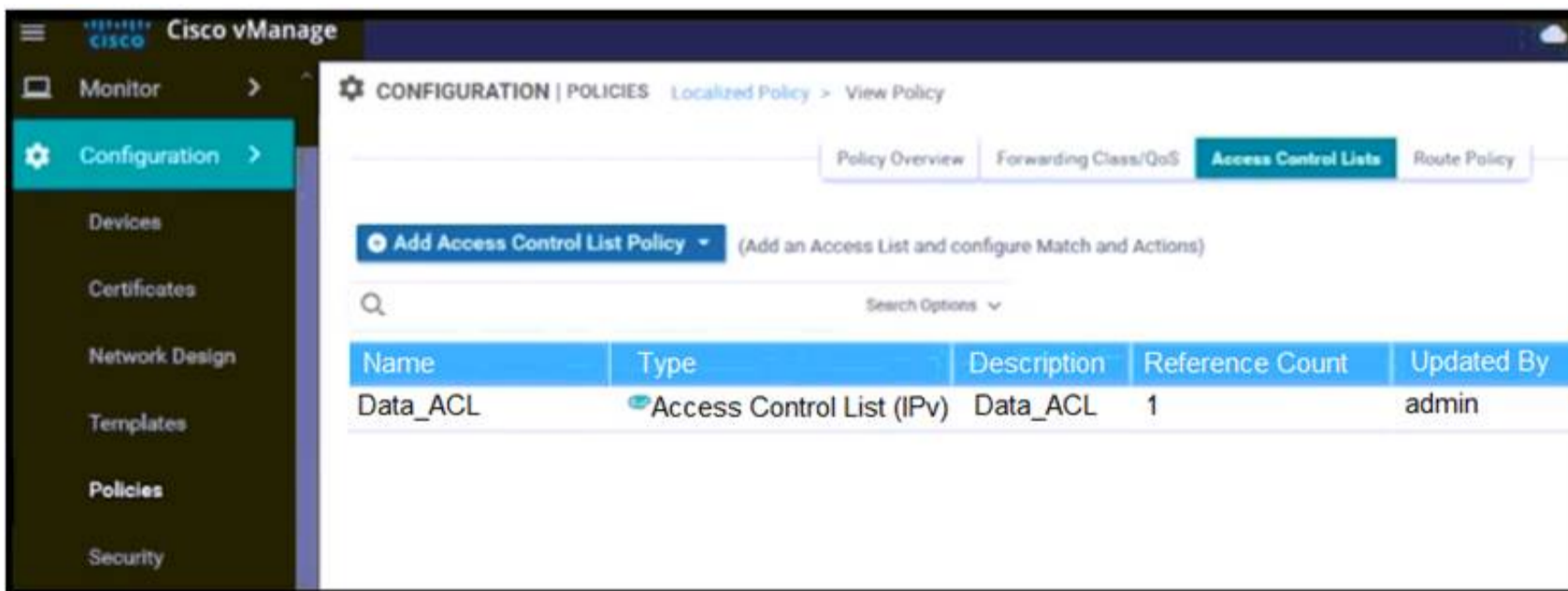
Answer: B

Explanation:

When a vEdge device comes up, how does it automatically discover Cisco vManage and Cisco vSmart Controller and establish connections with them? **It does so with help from Cisco vBond Orchestrator.**

NEW QUESTION 22

Refer to the exhibit.



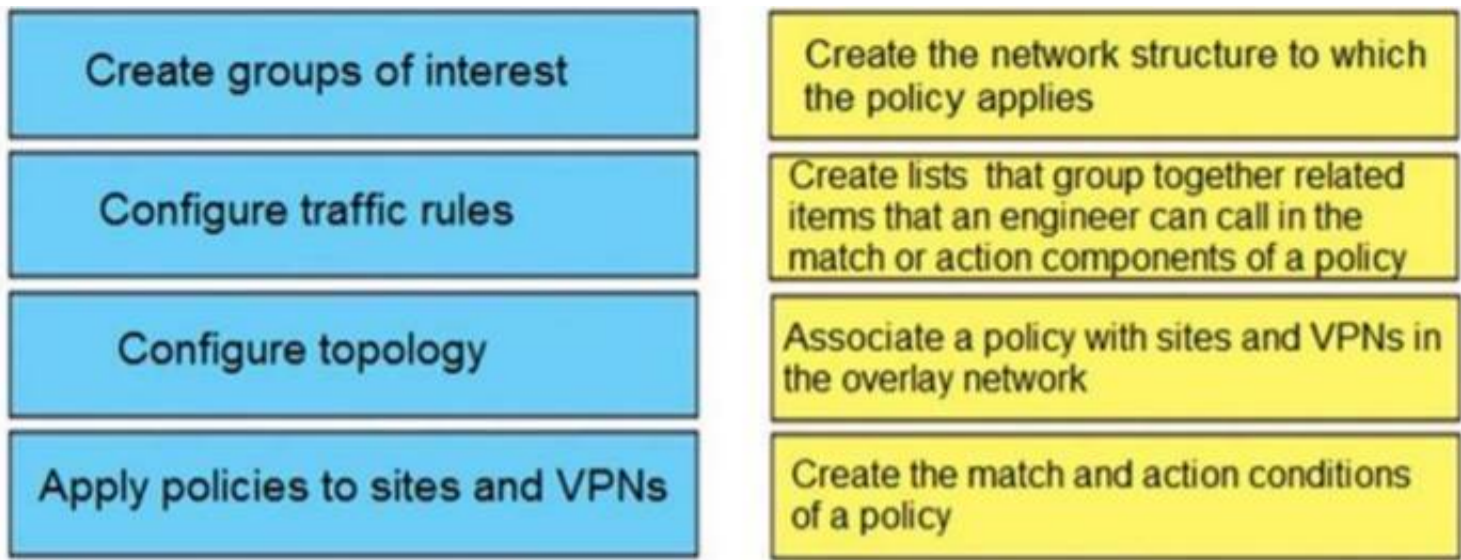
An engineer must block FTP traffic coming in from a particular Service VPN on a WAN Edge device Which set of steps achieves this goal?

- A. Create a localized policy and add it to (he interface feature template
- B. Create a localized policy add it to the device template and add an ACL to the interface feature template
- C. Create a prefix tat, add it to the localized policy and add it to the interface feature template
- D. Create a localized policy add it to VPN template and add an ACL to the interface feature template

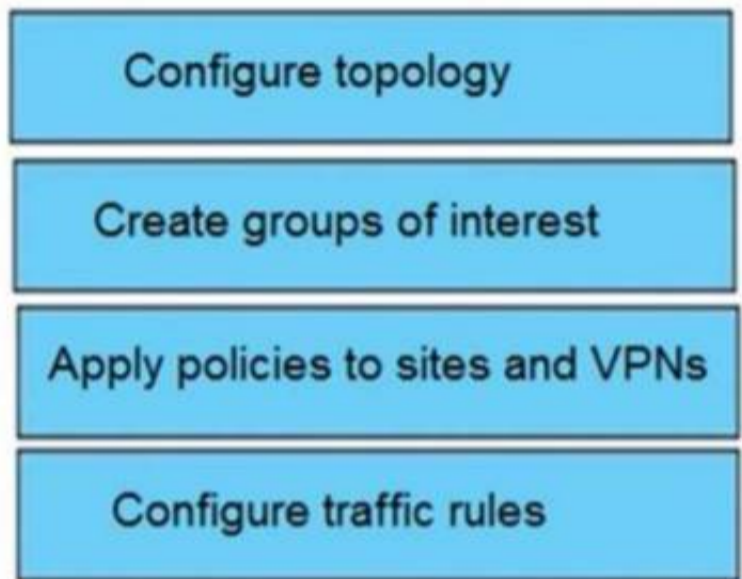
Answer: C

NEW QUESTION 23

Drag and drop the vManage policy configuration procedures from the left onto the correct definitions on the right.



Solution:



Does this meet the goal?

- A. Yes
- B. No

Answer: A

NEW QUESTION 24

An engineer must use data prefixes to configure centralized data policies using the vManage policy configuration wizard. What is the first step to accomplish this task?

- A. Create groups of interest
- B. Configure network topology.
- C. Configure traffic rules.
- D. Apply policies to sites and VPNs.

Answer: A

NEW QUESTION 25

Which command verifies a policy that has been pushed to the vEdge router?

- A. vEdge# show running-config data policy
- B. vEdge# show policy from-vsmart
- C. vSmart# show running-config policy
- D. vSmart# show running-config apply-policy

Answer: B

NEW QUESTION 26

An engineer must deploy a QoS policy with these requirements:

- policy name: App-police
- police rate: 1000000
- burst: 1000000
- exceed: drop

Which configuration meets the requirements?

```

vpn-list VPN10
sequence 1
match
A. app-list youtube
action accept
set
policer App-police

policy
data-policy policy-name
vpn-list 10
B. sequence 1
action accept
set
policer App-police

vpn 10
interface ge0/0/0
C. set
policer App-police in
default action accept

policy
action accept
D. set
policer App-police
    
```

- A. Option A
- B. Option B
- C. Option C
- D. Option D

Answer: B

NEW QUESTION 27

Drag and drop the definitions from the left to the configuration on the right.

matching condition that allows traffic flow between two zones	destination zone
grouping of VPNs where the data traffic flows originate	firewall policy
container that associates forwarding and blocking decisions	source zone
grouping of VPNs where the data traffic flows terminate	zone pair

Solution:

- **Source zone**—A grouping of VPNs where the data traffic flows originate.
- **Destination zone**—A grouping of VPNs where the data traffic flows terminate. A VPN can be part of only one zone
- **Zone-based firewall policy**—A data policy, similar to a localized data policy, that defines the conditions that the data traffic flow from the source zone must match to allow the flow to continue to the destination zone. Zone-based firewalls can match IP prefixes, IP ports, and protocols TCP, UDP, and ICMP. Matching flows can be accepted or dropped, and the packet headers can be logged. Nonmatching flows are dropped by default.
- **Zone pair**—A container that associates a source zone with a destination zone and that applies a zone-based firewall policy to the traffic that flows between zones.

[Service Chaining](#)
[Traffic Flow Monitoring with Cflow](#)

Does this meet the goal?

- A. Yes
- B. No

Answer: A

NEW QUESTION 28

Which OMP route is selected for equal OMP route preference values on WAN Edge routers?

- A. route with higher TLOC preference value
- B. route with origin type of connected
- C. route with origin type of static

D. route with lower TLOC preference value

Answer: A

NEW QUESTION 29

Which SD-WAN component is configured to enforce a policy to redirect branch-to-branch traffic toward a network service such as a firewall or IPS?

- A. vBond
- B. WAN Edge
- C. vSmart
- D. Firewall

Answer: C

NEW QUESTION 30

Which configuration changes the packet loss priority from low to highly?

A)

```
policy
 policer cnp-traffic
  rate 1000000
  burst 20000
  plp high
```

B)

```
policy
 policer cnp-traffic
  rate 1000000
  burst 20000
  exceed remark
```

C)

```
policy
 policer cnp-traffic
  rate 1000000
  burst 20000
  exceed drop
```

D)

```
policy
 policer cnp-traffic
  rate 1000000
  burst 20000
  exceed high
```

- A. Option A
- B. Option B
- C. Option C
- D. Option D

Answer: B

Explanation:

we change the PLP from low to high (configured by the policer exceed remark command)

<https://www.cisco.com/c/en/us/td/docs/routers/sdwan/configuration/qos/vEdge-20-x/qos-book/forwarding-qos.h>

NEW QUESTION 31

.....

Thank You for Trying Our Product

We offer two products:

1st - We have Practice Tests Software with Actual Exam Questions

2nd - Questions and Answers in PDF Format

300-415 Practice Exam Features:

- * 300-415 Questions and Answers Updated Frequently
- * 300-415 Practice Questions Verified by Expert Senior Certified Staff
- * 300-415 Most Realistic Questions that Guarantee you a Pass on Your First Try
- * 300-415 Practice Test Questions in Multiple Choice Formats and Updates for 1 Year

100% Actual & Verified — Instant Download, Please Click
[Order The 300-415 Practice Test Here](#)